

# \$39,900 - 20 Railway Avenue E, Marshall

MLS® #A2240118

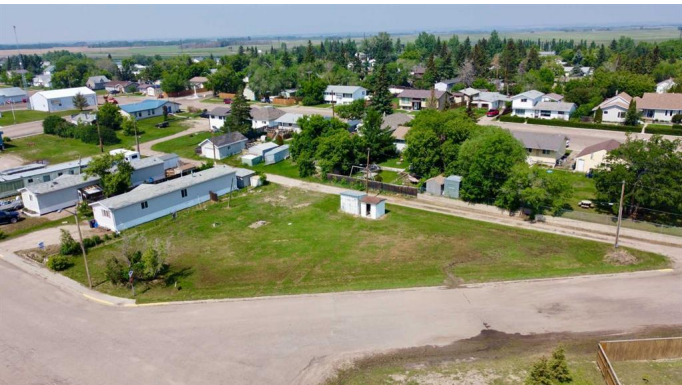
**\$39,900**

0 Bedroom, 0.00 Bathroom,  
Land on 0.52 Acres

NONE, Marshall, Saskatchewan

Welcome to 20 Railway Avenue, Marshall, SK. This spacious property offers a prime location in Marshall, just minutes from Lloydminster. Situated on a large double lot, this property spans 0.32 acres, providing ample space to build a comfortable home for your family. The corner lot ensures great access and visibility, while its proximity to the main street makes it convenient for connecting to the community.

According to the zoning bylaw, permitted uses include one (1) single-detached dwelling, including an RTM. Semi-detached, duplex, fourplex, or townhouse options may also be possible if space allows. This gives you flexibility whether you're looking to create a peaceful sanctuary, develop income potential, or enjoy an affordable lifestyle with room for recreational vehicles and other toys.



## Essential Information

MLS® #	A2240118
Price	\$39,900
Bathrooms	0.00
Acres	0.52
Type	Land
Sub-Type	Residential Land
Status	Active

## Community Information

Address	20 Railway Avenue E
---------	---------------------

Subdivision	NONE
City	Marshall
County	Saskatchewan
Province	Saskatchewan
Postal Code	S0M 1R0

### **Additional Information**

Date Listed	July 25th, 2025
Days on Market	4
Zoning	RMH

### **Listing Details**

Listing Office	RE/MAX OF LLOYDMINSTER
----------------	------------------------

Data is supplied by Pillar 9â„¢ MLS® System. Pillar 9â„¢ is the owner of the copyright in its MLS® System. Data is deemed reliable but is not guaranteed accurate by Pillar 9â„¢. The trademarks MLS®, Multiple Listing Service® and the associated logos are owned by The Canadian Real Estate Association (CREA) and identify the quality of services provided by real estate professionals who are members of CREA. Used under license.