

\$309,000 - 808, 1410 1 Street Se, Calgary

MLS® #A2239359

\$309,000

1 Bedroom, 1.00 Bathroom, 696 sqft

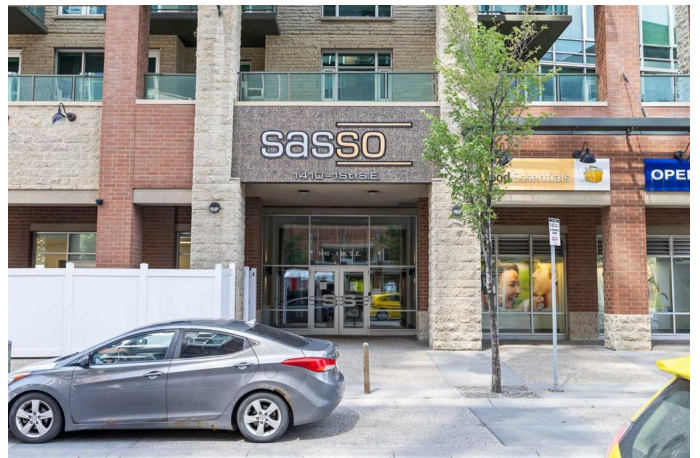
Residential on 0.00 Acres

Beltline, Calgary, Alberta

Welcome to Unit 808 at The Sasso, a bright and spacious 1-bedroom, 1-bath condo offering almost 700 square feet of stylish, functional living in the heart of Calgary's vibrant Beltline. Perched on the 8th floor, this unit features some of the most impressive views you'll find in the city. Gaze out toward the Stampede Grounds, the Rocky Mountains, 17th Avenue, MNP Centre, and the ever-growing skyline of Calgary's downtown core. Whether you're enjoying a coffee on your private balcony or entertaining friends in the evening, the scenery here never disappoints.

As you enter, you'll notice a smartly designed front entry with a large coat closet and a perfect nook for a home office or study setup. The open-concept layout flows seamlessly into the kitchen and living area, where floor-to-ceiling south-facing windows flood the space with natural light. The kitchen is well equipped with a full set of appliances including a dishwasher and microwave hood fan, a handy spray-hose faucet, and a generous eat-up island that works great for casual meals or entertaining.

The primary bedroom easily fits a king-sized bed and connects directly to a walk-through closet and a spacious 4-piece bathroom. You'll also appreciate the dedicated in-suite laundry room, which offers not just convenience but additional space for storage.



The monthly condo fee covers all utilities except electricity, giving you cost certainty and peace of mind. The building offers full-time concierge and on-site security, creating a safe and well-managed environment for residents.

Sasso is packed with lifestyle amenities including a fully equipped fitness centre with cardio and weights, a lounge with a pool table and wet bar, a movie theatre room, and even a hot tub and sauna for unwinding at the end of the day. You'll also enjoy a titled heated underground parking stall (stall 53 on P1) and an assigned storage locker (locker 40 on P1).

Location-wise, it doesn't get better than this. You're just steps from Calgary's new Entertainment District, the Saddledome, Sunterra Market, Shoppers Drug Mart, The Mustard Seed, and countless restaurants, shops, and parks. Plus, the Victoria Park/Stampede LRT station is on the same block, offering free fare within the downtown core and an easy commute anywhere in the city.

Whether you're looking for a stylish home with unbeatable views or a long-term investment in Calgary's inner city, this is a rare opportunity in one of the city's most exciting areas.

Built in 2006

Essential Information

MLS® #	A2239359
Price	\$309,000
Bedrooms	1
Bathrooms	1.00
Full Baths	1
Square Footage	696

Acres	0.00
Year Built	2006
Type	Residential
Sub-Type	Apartment
Style	Single Level Unit
Status	Active

Community Information

Address	808, 1410 1 Street Se
Subdivision	Beltline
City	Calgary
County	Calgary
Province	Alberta
Postal Code	T2G 5T7

Amenities

Amenities	Bicycle Storage, Elevator(s), Fitness Center, Party Room, Recreation Facilities, Recreation Room, Secured Parking, Spa/Hot Tub, Sauna
Parking Spaces	1
Parking	Parkade, Stall, Titled, Underground
# of Garages	1

Interior

Interior Features	Breakfast Bar, Closet Organizers, High Ceilings, No Smoking Home, Open Floorplan, Smart Home, Wired for Data
Appliances	Dishwasher, Electric Stove, Microwave Hood Fan, Refrigerator, Washer/Dryer Stacked, Window Coverings
Heating	Forced Air
Cooling	Central Air
# of Stories	24

Exterior

Exterior Features	Balcony
Construction	Concrete

Additional Information

Date Listed	July 12th, 2025
Days on Market	1
Zoning	DC (pre 1P2007)

Listing Details

Listing Office Brilliant Realty

Data is supplied by Pillar 9â„¢ MLS® System. Pillar 9â„¢ is the owner of the copyright in its MLS® System. Data is deemed reliable but is not guaranteed accurate by Pillar 9â„¢. The trademarks MLS®, Multiple Listing Service® and the associated logos are owned by The Canadian Real Estate Association (CREA) and identify the quality of services provided by real estate professionals who are members of CREA. Used under license.