

\$467,000 - 136 Oswald Close, Red Deer

MLS® #A2238834

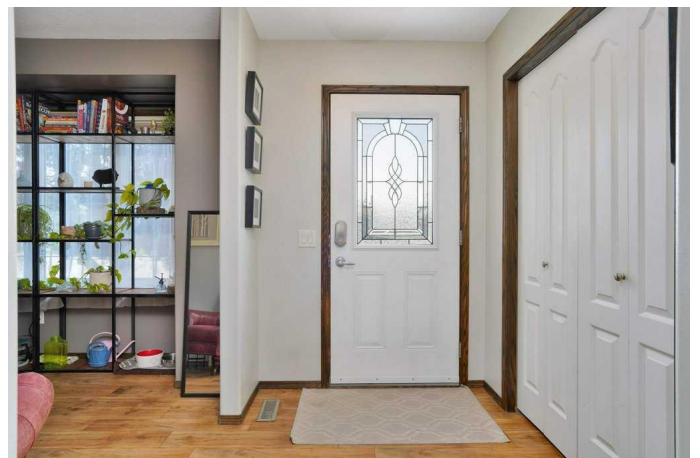
\$467,000

4 Bedroom, 4.00 Bathroom, 1,475 sqft

Residential on 0.12 Acres

Oriole Park West, Red Deer, Alberta

For the buyer looking for a beautiful fully developed 2 storey 4 bedroom home on a large pie lot with a double detached garage, 136 Oswald Close checks all the boxes!! A welcoming front foyer connects to a bright and spacious main floor front office - absolutely ideal for working at home or a great spot to relax with a good book. The open concept main floor is designed with today's living in mind - the well appointed kitchen features quartz countertops, a centre island, stainless appliances, GAS STOVE, maple cabinets, a corner pantry and subway tile backsplash. You won't be left out of the conversation with a nicely connected dining area and bright living room - an ideal space for the entire family to connect and enjoy! There is a 2pce bath on the main level and the rear patio door leads to the large 2 tiered deck and big pie lot with a private paver stone firepit area, storage shed and detached garage with an ADDITIONAL PARKING space beside the garage as well - there is plenty of space for kids and pets!! The upper level offers a full 4pce bath and 3 nice sized bedrooms with newer carpet. The large master bedroom has a walk-in closet and lovely renovated ensuite with a walk-in shower and custom tile work! The basement is fully finished with vinyl plank flooring, a 4th bedroom, full bath and rec room! Other notable features of this fine home include central A/C and custom Hunter Douglas blackout blinds on all windows throughout the house. The hot water tank, garage door and all



kitchen appliances as well as washer & dryer have all been replaced within the last 5 years and new shingles were install in 2014. This terrific family home is move in ready and perfect for families!!

Built in 2007

Essential Information

| | |
|----------------|-------------|
| MLS® # | A2238834 |
| Price | \$467,000 |
| Bedrooms | 4 |
| Bathrooms | 4.00 |
| Full Baths | 3 |
| Half Baths | 1 |
| Square Footage | 1,475 |
| Acres | 0.12 |
| Year Built | 2007 |
| Type | Residential |
| Sub-Type | Detached |
| Style | 2 Storey |
| Status | Active |

Community Information

| | |
|-------------|------------------|
| Address | 136 Oswald Close |
| Subdivision | Oriole Park West |
| City | Red Deer |
| County | Red Deer |
| Province | Alberta |
| Postal Code | T4P 0C1 |

Amenities

| | |
|----------------|------------------------------------------------------------------------------|
| Parking Spaces | 2 |
| Parking | Double Garage Detached, Garage Door Opener, Heated Garage, Garage Faces Rear |
| # of Garages | 2 |

Interior

| | |
|-------------------|-------------------------------------------------------------------------|
| Interior Features | Breakfast Bar, Kitchen Island, Open Floorplan, Pantry, Quartz Counters, |
|-------------------|-------------------------------------------------------------------------|

| | |
|--------------|-----------------------------------------------------------------------------------------------------------------------------|
| | Vinyl Windows, Walk-In Closet(s) |
| Appliances | Central Air Conditioner, Dishwasher, Dryer, Garage Control(s), Gas Stove, Microwave, Refrigerator, Washer, Window Coverings |
| Heating | Forced Air, Natural Gas |
| Cooling | Central Air |
| Has Basement | Yes |
| Basement | Finished, Full |

Exterior

| | |
|-------------------|---------------------------------------------------|
| Exterior Features | Storage |
| Lot Description | Back Lane, Cul-De-Sac, Landscaped, Pie Shaped Lot |
| Roof | Shingle |
| Construction | Concrete, Vinyl Siding, Wood Frame |
| Foundation | Poured Concrete |

Additional Information

| | |
|----------------|-----------------|
| Date Listed | July 13th, 2025 |
| Days on Market | 61 |
| Zoning | R-N |

Listing Details

| | |
|----------------|------------------------------------|
| Listing Office | RE/MAX real estate central alberta |
|----------------|------------------------------------|

Data is supplied by Pillar 9â„¢ MLS® System. Pillar 9â„¢ is the owner of the copyright in its MLS® System. Data is deemed reliable but is not guaranteed accurate by Pillar 9â„¢. The trademarks MLS®, Multiple Listing Service® and the associated logos are owned by The Canadian Real Estate Association (CREA) and identify the quality of services provided by real estate professionals who are members of CREA. Used under license.