

\$139,900 - 95, 41019 Range Road 11, Rural Lacombe County

MLS® #A2238060

\$139,900

0 Bedroom, 0.00 Bathroom,
Land on 0.09 Acres

Sandy Point, Rural Lacombe County, Alberta

Year round living a pretty Sandy Point!
This beautifully landscaped, developed lot offers room to enjoy and some privacy for cozy campfires!

The partially treed lot has the perfect space for your RV with a 30' finished, partially covered deck. This sought after location offers an asphalt parking pad for 2 vehicles as well as a large gravel pad for your boat or parking for extra guests.

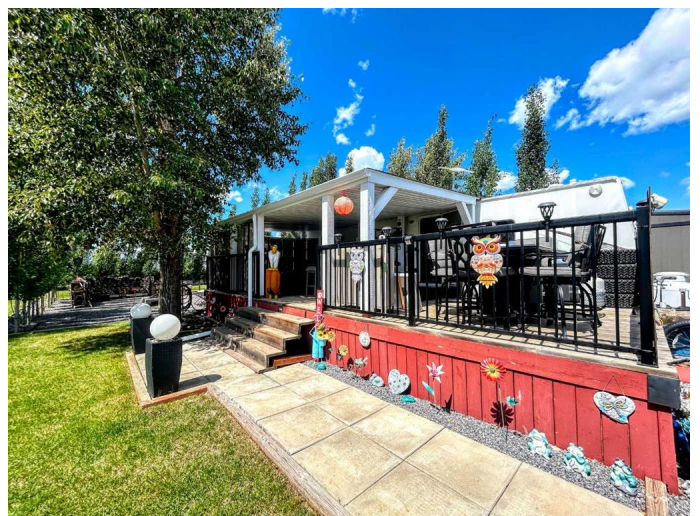
Situated in well established phase 2, this LARGE CORNER LOT has been developed over the years with mature trees, plush grass and plenty of outdoor living space and room for YOUR RV.

Tucked at the rear of the lot and surrounded by trees is your private gathering space complete with a graveled seating area centered by a large fire pit! Slightly shaded from the hot afternoon sun, this is THE space to rest and relax.

There is a fully finished, insulated 10'x15' shed for all your storage needs.

Low fees include sewer & water, common area maintenance and contributions to the reserve fund.

Relaxation starts HERE!



Essential Information

MLS® # A2238060

Price	\$139,900
Bathrooms	0.00
Acres	0.09
Type	Land
Sub-Type	Residential Land
Status	Active

Community Information

Address	95, 41019 Range Road 11
Subdivision	Sandy Point
City	Rural Lacombe County
County	Lacombe County
Province	Alberta
Postal Code	T0C0J1

Amenities

Amenities	Picnic Area, Playground, Beach Access, Boating, Coin Laundry, RV/Boat Storage
-----------	---

Exterior

Lot Description	Landscaped, Lawn, Near Golf Course
-----------------	------------------------------------

Additional Information

Date Listed	July 9th, 2025
Days on Market	17
Zoning	R-RVR

Listing Details

Listing Office	Royal LePage Network Realty Corp.
----------------	-----------------------------------

Data is supplied by Pillar 9â„¢ MLS® System. Pillar 9â„¢ is the owner of the copyright in its MLS® System. Data is deemed reliable but is not guaranteed accurate by Pillar 9â„¢. The trademarks MLS®, Multiple Listing Service® and the associated logos are owned by The Canadian Real Estate Association (CREA) and identify the quality of services provided by real estate professionals who are members of CREA. Used under license.