

\$292,500 - 13 Gordon Street, Red Deer

MLS® #A2237956

\$292,500

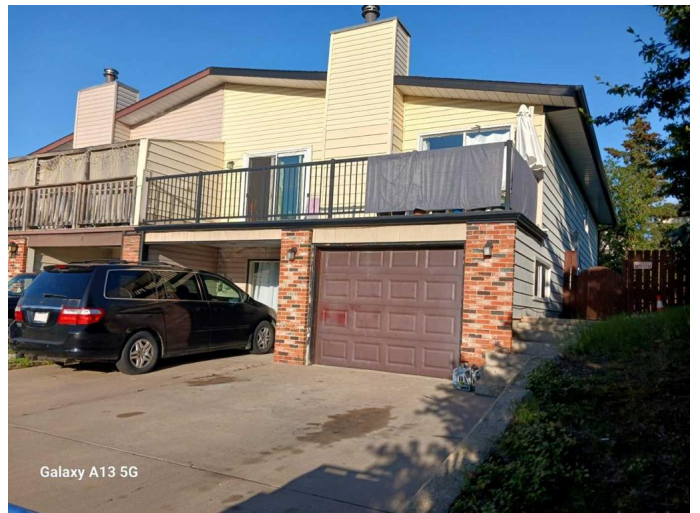
5 Bedroom, 2.00 Bathroom, 1,139 sqft
Residential on 0.12 Acres

Glendale, Red Deer, Alberta

In the Glendale subdivision, strategically placed on the north side of the city of Red Deer, and dating back to the early 1980s, several styles of semi-detached homes, a.k.a duplexes, were built. Only a few had the class, style, the fireplace, and the floor plan appeal this home on Gordon street possess. A slightly bigger floor plan with main floor entrance, concrete patio, balcony, separate walk out, walk in basement entrance, and a 14' x 22' attached garage was considered a fancy-schmancy alternative to purchasing a single detached home. You can benefit from the full development with 3 bedrooms on the main floor that is very accommodating and two huge bedrooms in the basement are an added plus, plus. Very clean and very tidy tenants even adds a bigger value you can benefit from if you need a sweet return on investing in yourself and your real estate holdings. Exterior features include cement patio near basement entrance, a wonderful deck on the main floor off the dining room area, a simple, lush, well maintained lawn runs a little west and a little south, again so you can benefit from basking. NO back alley, a huge benefit, no dust, no fuss, no traffic, only peace, quiet, and possibly a new path to Zen. Owner selling as is, where is, with no warranty due to the fact owner is out of province.

Built in 1980

Essential Information



| | |
|----------------|------------------------|
| MLS® # | A2237956 |
| Price | \$292,500 |
| Bedrooms | 5 |
| Bathrooms | 2.00 |
| Full Baths | 2 |
| Square Footage | 1,139 |
| Acres | 0.12 |
| Year Built | 1980 |
| Type | Residential |
| Sub-Type | Semi Detached |
| Style | Side by Side, Bungalow |
| Status | Active |

Community Information

| | |
|-------------|------------------|
| Address | 13 Gordon Street |
| Subdivision | Glendale |
| City | Red Deer |
| County | Red Deer |
| Province | Alberta |
| Postal Code | T4P 2L6 |

Amenities

| | |
|----------------|---|
| Parking Spaces | 3 |
| Parking | Driveway, Garage Faces Front, Outside, Single Garage Attached |
| # of Garages | 1 |

Interior

| | |
|-------------------|--|
| Interior Features | No Animal Home, No Smoking Home, Vinyl Windows |
| Appliances | Electric Stove, Refrigerator |
| Heating | Forced Air, Natural Gas |
| Cooling | None |
| Fireplace | Yes |
| # of Fireplaces | 1 |
| Fireplaces | Living Room, Wood Burning, Stone |
| Has Basement | Yes |
| Basement | Finished, Full |

Exterior

| | |
|-------------------|------------------|
| Exterior Features | Balcony, Storage |
|-------------------|------------------|

| | |
|-----------------|---|
| Lot Description | Back Yard, Level, Pie Shaped Lot, Irregular Lot |
| Roof | Asphalt Shingle |
| Construction | Concrete, Wood Frame, Wood Siding, Veneer |
| Foundation | Poured Concrete |

Additional Information

| | |
|----------------|----------------|
| Date Listed | July 8th, 2025 |
| Days on Market | 1 |
| Zoning | R1A |

Listing Details

| | |
|----------------|------------------------------------|
| Listing Office | Maxwell Real Estate Solutions Ltd. |
|----------------|------------------------------------|

Data is supplied by Pillar 9â„¢ MLS® System. Pillar 9â„¢ is the owner of the copyright in its MLS® System. Data is deemed reliable but is not guaranteed accurate by Pillar 9â„¢. The trademarks MLS®, Multiple Listing Service® and the associated logos are owned by The Canadian Real Estate Association (CREA) and identify the quality of services provided by real estate professionals who are members of CREA. Used under license.