

# \$89,900 - 104, 10230 106 Avenue, Grande Prairie

MLS® #A2237949

**\$89,900**

1 Bedroom, 1.00 Bathroom, 583 sqft

Residential on 0.00 Acres

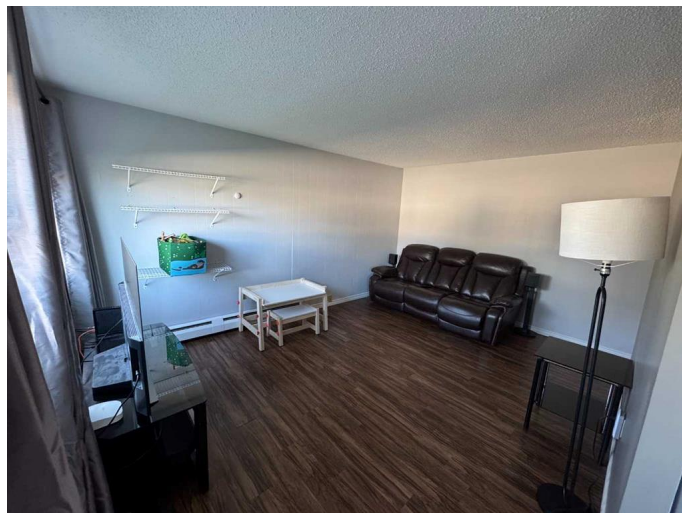
Avondale., Grande Prairie, Alberta

Located near the scenic Muskoseepi Park, this solid and quiet one-bedroom ground-floor condo in Matricia Towers offers exceptional value and convenience. Located within walking distance to shopping and just a short walk across the park to Northern Polytechnic, it's perfect for students, professionals, or anyone seeking a peaceful yet and everything-is-nearby lifestyle. The affordable condo fees include heat, water, and garbage, making this one of the most budget-friendly ownership opportunities in the area. Residents also enjoy free laundry facilities on every floor, assigned outdoor parking, and access to a fenced green space—ideal for relaxing or socializing in a private outdoor setting.

Built in 1969

## Essential Information

MLS® #	A2237949
Price	\$89,900
Bedrooms	1
Bathrooms	1.00
Full Baths	1
Square Footage	583
Acres	0.00
Year Built	1969
Type	Residential
Sub-Type	Apartment
Style	Multi Level Unit



Status	Active
--------	--------

## Community Information

Address	104, 10230 106 Avenue
Subdivision	Avondale.
City	Grande Prairie
County	Grande Prairie
Province	Alberta
Postal Code	T8V5G8

## Amenities

Amenities	Elevator(s), Laundry, Picnic Area
Parking Spaces	1
Parking	Stall

## Interior

Interior Features	See Remarks
Appliances	See Remarks
Heating	Baseboard, Hot Water
Cooling	None
# of Stories	5

## Exterior

Exterior Features	None
Construction	Stucco

## Additional Information

Date Listed	July 10th, 2025
Days on Market	9
Zoning	RM

## Listing Details

Listing Office	RE/MAX Grande Prairie
----------------	-----------------------

Data is supplied by Pillar 9â„¢ MLS® System. Pillar 9â„¢ is the owner of the copyright in its MLS® System. Data is deemed reliable but is not guaranteed accurate by Pillar 9â„¢. The trademarks MLS®, Multiple Listing Service® and the associated logos are owned by The Canadian Real Estate Association (CREA) and identify the quality of services provided by real estate professionals who are members of CREA. Used under license.