

\$240,000 - 3, 893 Mt Sundance Manor W, Lethbridge

MLS® #A2237550

\$240,000

2 Bedroom, 1.00 Bathroom, 898 sqft

Residential on 0.00 Acres

Sunridge, Lethbridge, Alberta

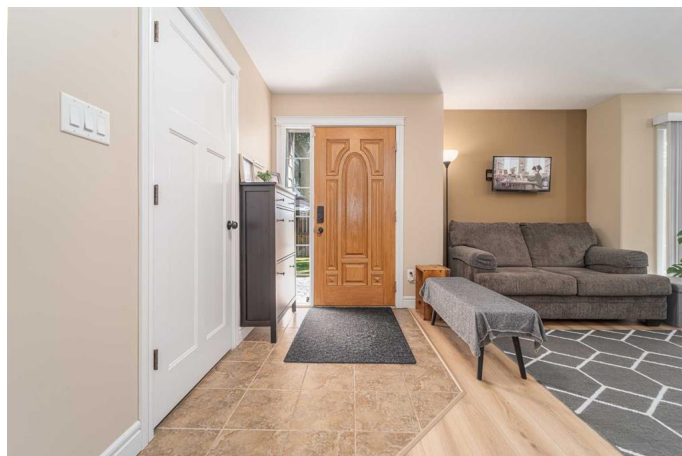
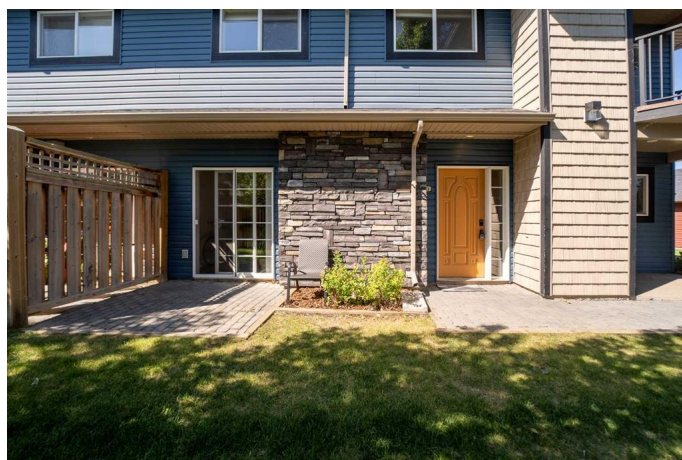
Welcome to this GROUND FLOOR 898 sq.ft, 2-bedroom, 1-bathroom condo located in Sunridge. This unit has brand new flooring in the kitchen and living room, granite countertops, convenient in-suite laundry, storage, and central A/C for year-round comfort. All exterior maintenance, including snow removal and lawn care, is taken care of, making this property perfect for students, investors, or first-time buyers. Close to walking paths, a massive park, and nearby conveniences like Tim Horton's, Subway, and more.

Built in 2008

Essential Information

MLS® #	A2237550
Price	\$240,000
Bedrooms	2
Bathrooms	1.00
Full Baths	1
Square Footage	898
Acres	0.00
Year Built	2008
Type	Residential
Sub-Type	Row/Townhouse
Style	Stacked Townhouse
Status	Active

Community Information



Address	3, 893 Mt Sundance Manor W
Subdivision	Sunridge
City	Lethbridge
County	Lethbridge
Province	Alberta
Postal Code	T1J1X7

Amenities

Amenities	Parking, Visitor Parking, Storage
Parking Spaces	1
Parking	Off Street, Stall, 220 Volt Wiring

Interior

Interior Features	Granite Counters, Kitchen Island
Appliances	Central Air Conditioner, Dishwasher, Dryer, Electric Range, Microwave Hood Fan, Refrigerator, Washer
Heating	Forced Air
Cooling	Central Air
Basement	None

Exterior

Exterior Features	Private Entrance
Lot Description	Street Lighting
Roof	Asphalt
Construction	Vinyl Siding
Foundation	Poured Concrete

Additional Information

Date Listed	July 7th, 2025
Days on Market	6
Zoning	R-50

Listing Details

Listing Office	REAL BROKER
----------------	-------------

Data is supplied by Pillar 9â„¢ MLSÂ® System. Pillar 9â„¢ is the owner of the copyright in its MLSÂ® System. Data is deemed reliable but is not guaranteed accurate by Pillar 9â„¢. The trademarks MLSÂ®, Multiple Listing ServiceÂ® and the associated logos are owned by The Canadian Real Estate Association (CREA) and identify the quality of services provided by real estate professionals who are members of CREA. Used under license.