

# \$569,900 - 355 Pinewind Road Ne, Calgary

MLS® #A2236834

**\$569,900**

4 Bedroom, 3.00 Bathroom, 1,177 sqft  
Residential on 0.11 Acres

Pineridge, Calgary, Alberta

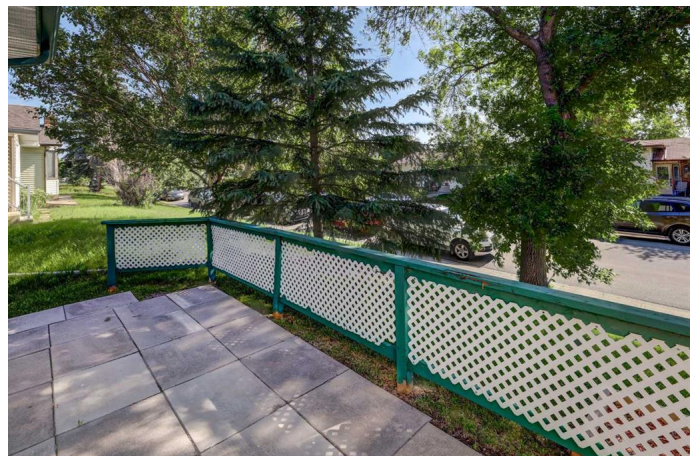
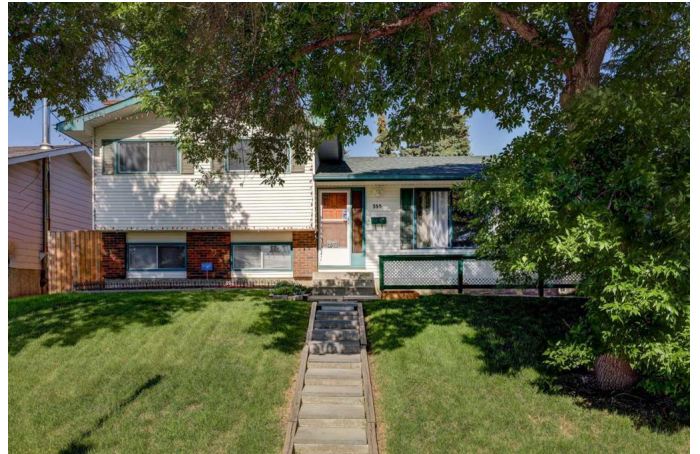
**\*\*New Price: \$569,000 â€“ Immaculate,  
Updated, and Move-In Ready!\*\***

Welcome to this exceptionally maintained 4-level split in the heart of Pineridge, proudly owned by the same family for over 40 years. Offering 1,176 sq ft above grade and thoughtfully updated throughout, this home delivers outstanding value in a well-established community.

Recent 2025 updates include fresh main-floor paint and new kitchen flooring, creating a bright, contemporary feel. Step outside to your private backyard retreat complete with a two-tier deck (2024), newer concrete patios and sidewalks (2023), custom planters, and a charming gazeboâ€”ideal for relaxing or entertaining.

This home is built for comfort and longevity, featuring a new furnace motor (2020), commercial-grade A/C (2019), and 35-year fiberglass shingles (2009) with a lifetime warranty. The spacious layout includes 4 bedrooms, a flexible main-floor room perfect for guests or a home office, and 2.5 bathrooms, including a renovated ensuite in the refreshed primary suite.

The fully finished basement offers a large family room, games area, and extra storage. A double detached garage with workshop potential and a fenced yard make it ideal for



families and pet lovers alike.

Located within walking distance to schools, parks, shopping, restaurants, and the Village Square Leisure Centre, plus quick access to Memorial Drive and Stoney Trail for effortless commuting.

If you're seeking a turnkey home with upgrades inside and out, in a desirable, family-friendly neighborhood—this is it. Schedule your showing today!

Built in 1975

**Essential Information**

MLS® #	A2236834
Price	\$569,900
Bedrooms	4
Bathrooms	3.00
Full Baths	2
Half Baths	1
Square Footage	1,177
Acres	0.11
Year Built	1975
Type	Residential
Sub-Type	Detached
Style	4 Level Split
Status	Active

**Community Information**

Address	355 Pinewind Road Ne
Subdivision	Pineridge
City	Calgary
County	Calgary
Province	Alberta
Postal Code	T1Y 2H2

**Amenities**

Parking Spaces	2
----------------	---

Parking	Alley Access, Double Garage Detached, Off Street
# of Garages	2

## Interior

Interior Features	Breakfast Bar, Built-in Features, Central Vacuum, Dry Bar, Kitchen Island, Open Floorplan, See Remarks, Storage
Appliances	Dishwasher, Dryer, Microwave, Refrigerator, Stove(s), Washer, Window Coverings
Heating	Forced Air, Natural Gas
Cooling	Central Air
Fireplace	Yes
# of Fireplaces	1
Fireplaces	Basement, Brick Facing, Family Room, Wood Burning
Has Basement	Yes
Basement	Finished, Full, Partially Finished

## Exterior

Exterior Features	Garden, Private Yard, Storage
Lot Description	Back Yard, City Lot, Front Yard, Garden, Gentle Sloping, Rectangular Lot
Roof	Asphalt Shingle
Construction	Vinyl Siding, Wood Frame
Foundation	Poured Concrete

## Additional Information

Date Listed	July 3rd, 2025
Days on Market	30
Zoning	R-CG

## Listing Details

Listing Office	The Real Estate District
----------------	--------------------------

Data is supplied by Pillar 9â„¢ MLS® System. Pillar 9â„¢ is the owner of the copyright in its MLS® System. Data is deemed reliable but is not guaranteed accurate by Pillar 9â„¢. The trademarks MLS®, Multiple Listing Service® and the associated logos are owned by The Canadian Real Estate Association (CREA) and identify the quality of services provided by real estate professionals who are members of CREA. Used under license.