

\$390,000 - 4535 Moore Crescent, Red Deer

MLS® #A2236683

\$390,000

3 Bedroom, 3.00 Bathroom, 1,885 sqft

Residential on 0.14 Acres

Waskasoo, Red Deer, Alberta

A little work will go a long way! What a great location, steps from the Red Deer River, city walking/biking trails, numerous parks, numerous schools, and most amenities is where you will find your next investment property. There are a lot of upgrades to this home, and with a little love, time and some investment money, this property could be a jewel in the neighbourhood. The potential is endless, so bring your imagination and come and have a look!

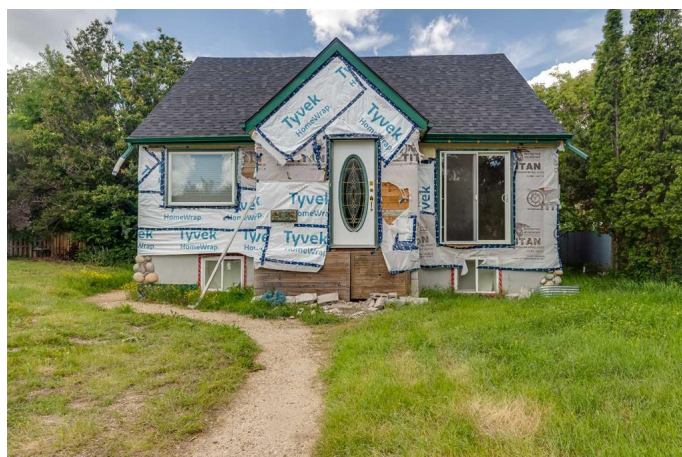
Built in 1947

Essential Information

MLS® #	A2236683
Price	\$390,000
Bedrooms	3
Bathrooms	3.00
Full Baths	3
Square Footage	1,885
Acres	0.14
Year Built	1947
Type	Residential
Sub-Type	Detached
Style	1 and Half Storey
Status	Active

Community Information

Address	4535 Moore Crescent
Subdivision	Waskasoo



City	Red Deer
County	Red Deer
Province	Alberta
Postal Code	T4N 2M1

Amenities

Parking Spaces	2
Parking	Double Garage Attached
# of Garages	2

Interior

Interior Features	See Remarks, Separate Entrance, Storage
Appliances	None
Heating	Forced Air
Cooling	None
Has Basement	Yes
Basement	Finished, Full

Exterior

Exterior Features	Private Yard
Lot Description	Back Lane, Back Yard, Landscaped
Roof	Asphalt Shingle
Construction	Wood Frame
Foundation	Block, Poured Concrete

Additional Information

Date Listed	July 8th, 2025
Days on Market	60
Zoning	R-L

Listing Details

Listing Office	RE/MAX real estate central alberta
----------------	------------------------------------

Data is supplied by Pillar 9â„¢ MLS® System. Pillar 9â„¢ is the owner of the copyright in its MLS® System. Data is deemed reliable but is not guaranteed accurate by Pillar 9â„¢. The trademarks MLS®, Multiple Listing Service® and the associated logos are owned by The Canadian Real Estate Association (CREA) and identify the quality of services provided by real estate professionals who are members of CREA. Used under license.