

# \$824,900 - 32328 Range Road 42, Rural Mountain View County

---

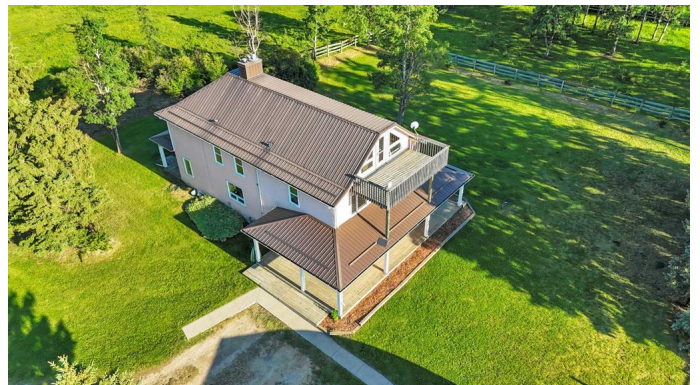
MLS® #A2235881

**\$824,900**

4 Bedroom, 2.00 Bathroom, 2,981 sqft  
Residential on 8.20 Acres

NONE, Rural Mountain View County, Alberta

Gone With The Wind... and Straight Into Your Heart in Harmattan! Step back in time & embrace the grandeur of a bygone era in this stately 2½-story character home, built in the year 1912, when craftsmanship was an art & homes were built to stand for generations. With nearly 3,000 sq ft of developed living space, this enchanting estate echoes the elegance & soul of the Old South—reimagined for modern, multi-functional living. As you walk through the doors, imagine the swish of hoop skirts & the soft hum of piano keys playing in the distance. The main floor's grand living room, complete with a wood-burning stove, invites you to gather, to lounge, to live fully—with space enough for the most sumptuous furniture arrangements. A spacious formal dining room, ideal for hosting lavish family dinners, is adorned with built-in cabinets reminiscent of fine sideboards, echoing timeless hospitality. The MAIN KITCHEN is a culinary dream from another age—crafted with wall-to-wall solid oak cabinetry, expansive counters, & a brick-faced stove alcove that feels like it came straight from Tara itself. Just steps away, the SECOND FULL KITCHEN offers self-contained space ideal for extended family or guests—each with privacy & independence, yet united under one roof. With TWO primary bedrooms, TWO additional bedrooms, and a third-floor loft that can serve



as a fifth bedroom—or perhaps a writer’s retreat, a quiet library, or a whimsical nursery—there is no end to the possibilities. Nestled off to the side in the loft is a charming sauna room, & from the west-facing upper balcony, you’ll gaze out toward the mountains & sunsets that seem torn from a painted canvas. Each room is bathed in natural sunlight through large windows on every floor, as if the home itself were welcoming you to stay a little longer, to breathe deeply, & to dream more freely. Beyond the home, on 8.2 acres of peaceful countryside, the charm continues. A wrap-around deck offers views of open fields, trees rustling in the breeze, & the occasional deer or moose wandering past. The 35'7" x 48'4" Quonset is a marvel in itself—part garage, part workshop, part stable, part tack room, and even features a 748 sq ft mezzanine for extra storage or creative space. The property is fully fenced & cross-fenced, with a stock waterer in place—ready for your horses, livestock, or dreams of country life. This is not merely a home; it is a legacy. A place where stories begin, where laughter echoes through the halls, & where generations can build a future as rich as its past. "Home Is Where Your Story Begins!"

Built in 1912

**Essential Information**

MLS® #	A2235881
Price	\$824,900
Bedrooms	4
Bathrooms	2.00
Full Baths	2
Square Footage	2,981
Acres	8.20
Year Built	1912
Type	Residential

Sub-Type	Detached
Style	Acreage with Residence, 2 and Half Storey
Status	Active

### Community Information

Address	32328 Range Road 42
Subdivision	NONE
City	Rural Mountain View County
County	Mountain View County
Province	Alberta
Postal Code	T0M 1X0

### Amenities

Parking	Double Garage Detached, RV Access/Parking
# of Garages	2

### Interior

Interior Features	Built-in Features, Ceiling Fan(s), High Ceilings, Kitchen Island, Natural Woodwork, No Smoking Home
Appliances	Dishwasher, Dryer, Range Hood, Refrigerator, Stove(s), Washer
Heating	Forced Air, Natural Gas
Cooling	None
Fireplace	Yes
# of Fireplaces	1
Fireplaces	Brick Facing, Mantle, Wood Burning Stove
Has Basement	Yes
Basement	Full, Unfinished

### Exterior

Exterior Features	Private Entrance, Private Yard, Storage
Lot Description	Back Yard, Front Yard, Landscaped, Lawn, Level, Many Trees, No Neighbours Behind, Private, Rectangular Lot, Views, Corners Marked, Pasture
Roof	Metal
Construction	Stucco, Wood Frame
Foundation	Poured Concrete

### Additional Information

Date Listed	July 1st, 2025
Days on Market	48

Zoning                      A Agricultural District

**Listing Details**

Listing Office              CIR Realty

Data is supplied by Pillar 9â„¢ MLS® System. Pillar 9â„¢ is the owner of the copyright in its MLS® System. Data is deemed reliable but is not guaranteed accurate by Pillar 9â„¢. The trademarks MLS®, Multiple Listing Service® and the associated logos are owned by The Canadian Real Estate Association (CREA) and identify the quality of services provided by real estate professionals who are members of CREA. Used under license.