

# \$59,900 - 11 600 14 Street, Beaverlodge

---

MLS® #A2235805

**\$59,900**

2 Bedroom, 1.00 Bathroom, 1,013 sqft

Residential on 0.07 Acres

NONE, Beaverlodge, Alberta

Looking for comfort and simplicity without breaking the bank? This well-maintained 2-bedroom, 1-bathroom mobile home offers the perfect blend of affordability and convenience. Nestled on a quiet rented lot in a friendly community, this home is ideal for first-time buyers, downsizers, or anyone seeking a budget-friendly place to call their own.

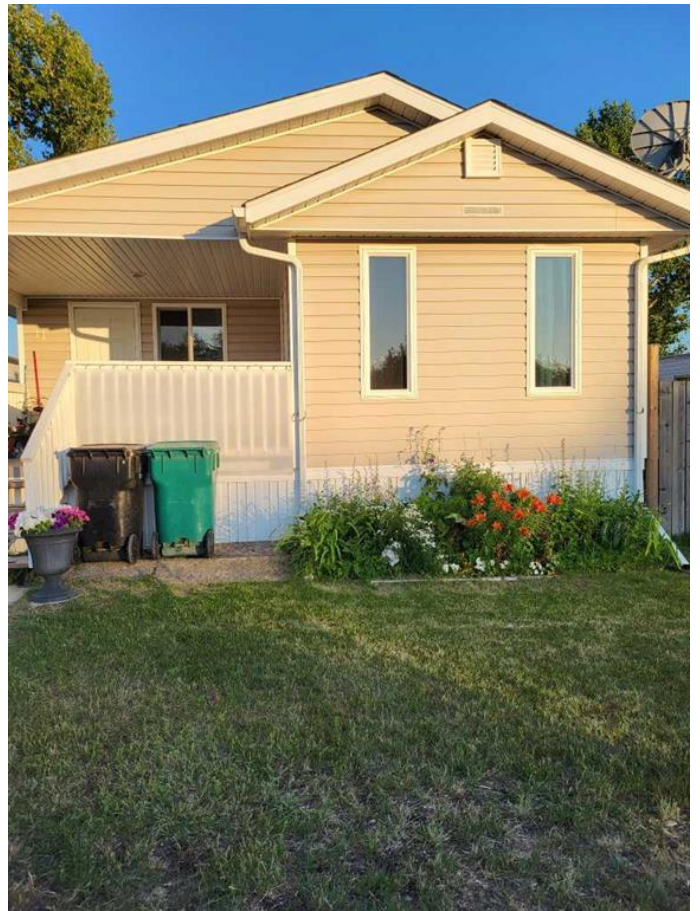
? Key Features:

- Spacious living room
- Quaint kitchen with ample cabinetry
- Two comfortable bedrooms with generous closet space
- Full 4-piece bathroom
- Laundry in hallway
- Private yard space with room to garden or relax

- Parking available for two vehicles

Location Highlights: Enjoy a peaceful neighborhood atmosphere with easy access to shopping, schools, and parks. Lot rent includes water/sewer and garbage collection.

Why Rent When You Can Own? This is a fantastic opportunity to step into home ownership at an affordable price. Quick possession available—move in and make it yours!



Built in 1972

## Essential Information

MLS® #	A2235805
Price	\$59,900
Bedrooms	2
Bathrooms	1.00
Full Baths	1
Square Footage	1,013
Acres	0.07
Year Built	1972
Type	Residential
Sub-Type	Detached
Style	Single Wide Mobile Home
Status	Active

## Community Information

Address	11 600 14 Street
Subdivision	NONE
City	Beaverlodge
County	Grande Prairie No. 1, County of
Province	Alberta
Postal Code	T0H0C0

## Amenities

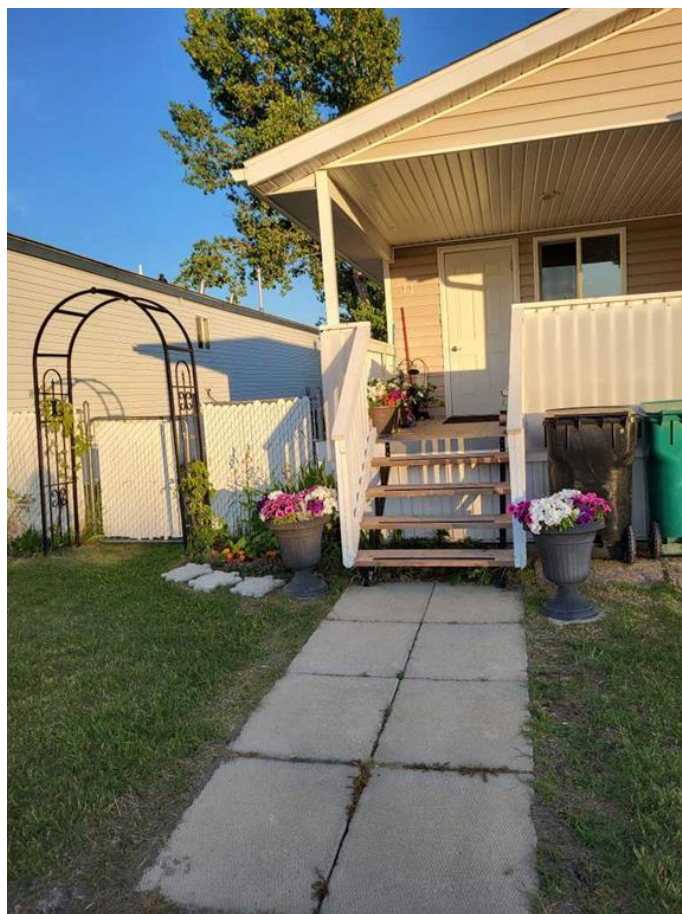
Parking Spaces	2
Parking	Parking Pad

## Interior

Interior Features	Laminate Counters
Appliances	Dishwasher, Electric Range, Refrigerator, Washer/Dryer
Heating	Forced Air, Wood Stove
Cooling	None
Fireplace	Yes
# of Fireplaces	1
Fireplaces	Wood Burning Stove
Basement	None

## Exterior

Exterior Features	Balcony, Fire Pit, Private Yard, Storage
Lot Description	No Neighbours Behind, Rectangular Lot



Roof	Asphalt Shingle
Construction	Vinyl Siding
Foundation	Piling(s)

Additional Information

Date Listed	June 30th, 2025
Days on Market	2
Zoning	NA

Listing Details

Listing Office	Sutton Group Grande Prairie Pr
----------------	--------------------------------



Data is supplied by Pillar 9â„¢ MLSÂ® System. Pillar 9â„¢ is the owner of the copyright in its MLSÂ® System. Data is deemed reliable but is not guaranteed accurate by Pillar 9â„¢. The trademarks MLSÂ®, Multiple Listing ServiceÂ® and the associated logos are owned by The Canadian Real Estate Association (CREA) and identify the quality of services provided by real estate professionals who are members of CREA. Used under license.