

# \$330,000 - 4802 16 Street, Lloydminster

MLS® #A2234448

**\$330,000**

4 Bedroom, 3.00 Bathroom, 1,144 sqft

Residential on 0.12 Acres

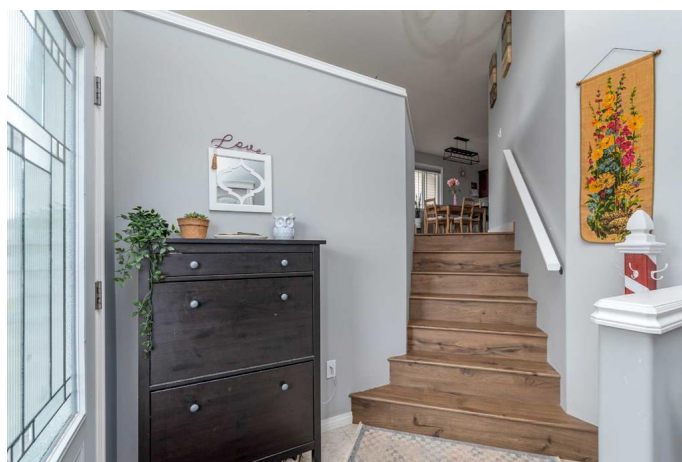
Wallacefield, Lloydminster, Saskatchewan

Step into this bright and stylish home featuring an open-concept main floor flooded with natural light. The spacious living room seamlessly flows into the dining area and a modern kitchen complete with quartz countertops, a sit-up breakfast bar, ample cabinetry, and generous counter space. The main floor offers two bedrooms and two bathrooms, including a spacious primary suite with a large walk-in closet and a full ensuite. The fully finished basement offers suite potential with a full kitchenette, large windows that brighten the expansive family room, a four-piece bathroom, and two additional bedroomsâ€”perfect for guests or rental income. Further highlights include central AC , ample parking, RV parking potential, and a fully landscaped yard with a storage shed and a large deck to appreciate all summer. Donâ€™t miss this incredible opportunityâ€”check out the 3D virtual tour today!

Built in 2012

## Essential Information

MLS® #	A2234448
Price	\$330,000
Bedrooms	4
Bathrooms	3.00
Full Baths	3
Square Footage	1,144



Acres	0.12
Year Built	2012
Type	Residential
Sub-Type	Detached
Style	Bi-Level
Status	Active

### **Community Information**

Address	4802 16 Street
Subdivision	Wallacefield
City	Lloydminster
County	Lloydminster
Province	Saskatchewan
Postal Code	S9V 1X1

### **Amenities**

Parking Spaces	2
Parking	Concrete Driveway, Off Street, RV Access/Parking

### **Interior**

Interior Features	Open Floorplan, Quartz Counters, Storage, Walk-In Closet(s)
Appliances	Dishwasher, Refrigerator, Stove(s), Washer/Dryer
Heating	Forced Air, Natural Gas
Cooling	Central Air
Has Basement	Yes
Basement	Finished, Full

### **Exterior**

Exterior Features	Private Yard, Storage
Lot Description	Back Yard, City Lot, Front Yard, Lawn, Rectangular Lot
Roof	Asphalt Shingle
Construction	Vinyl Siding
Foundation	Wood

### **Additional Information**

Date Listed	June 23rd, 2025
Days on Market	13
Zoning	R1

### **Listing Details**

Listing Office

CENTURY 21 DRIVE

Data is supplied by Pillar 9â„¢ MLSÂ® System. Pillar 9â„¢ is the owner of the copyright in its MLSÂ® System. Data is deemed reliable but is not guaranteed accurate by Pillar 9â„¢. The trademarks MLSÂ®, Multiple Listing ServiceÂ® and the associated logos are owned by The Canadian Real Estate Association (CREA) and identify the quality of services provided by real estate professionals who are members of CREA. Used under license.