

# \$239,900 - 1111 7th Avenue, Beaverlodge

MLS® #A2234082

**\$239,900**

4 Bedroom, 1.00 Bathroom, 1,397 sqft

Residential on 0.24 Acres

N/A, Beaverlodge, Alberta

Nice character home on a large .24+/- acre lot close to the high School and shopping. This home has had many updates in the last few years, it shows very well and is a good solid home. It has 4 bedrooms and 1 bath and 4 appliances. Nice rear deck, and a front covered sitting area. Homes are going fast in the town of Beaverlodge, call today for your personal viewing. 24 hours notice for viewings there are tenants in place.

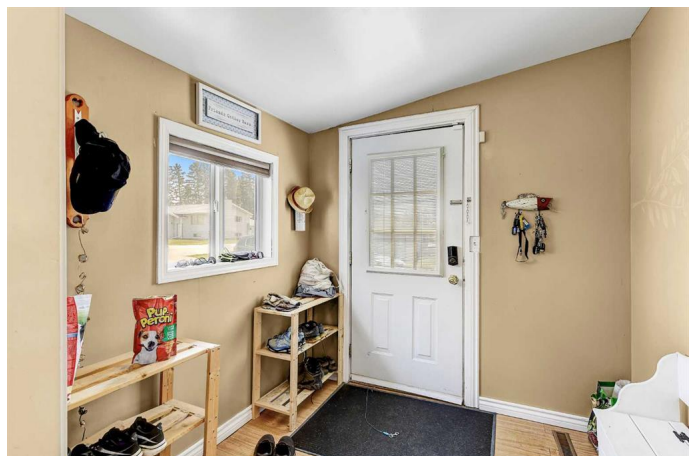
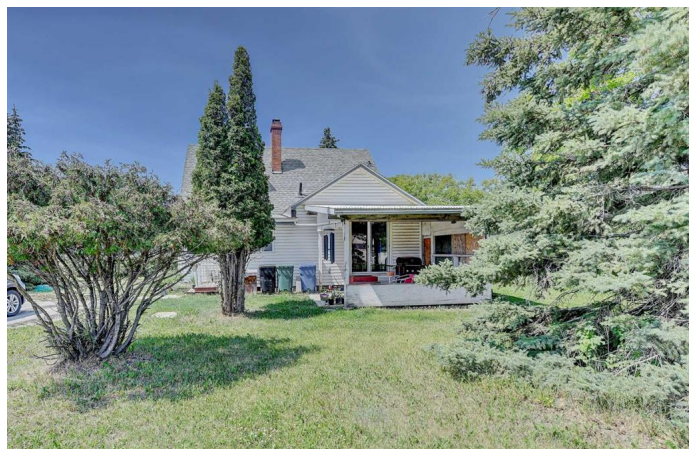
Built in 1948

## Essential Information

MLS® #	A2234082
Price	\$239,900
Bedrooms	4
Bathrooms	1.00
Full Baths	1
Square Footage	1,397
Acres	0.24
Year Built	1948
Type	Residential
Sub-Type	Detached
Style	1 and Half Storey
Status	Active

## Community Information

Address	1111 7th Avenue
Subdivision	N/A



City	Beaverlodge
County	Grande Prairie No. 1, County of
Province	Alberta
Postal Code	T0H 0C0

### **Amenities**

Parking Spaces	4
Parking	Off Street

### **Interior**

Interior Features	Ceiling Fan(s)
Appliances	Dryer, Electric Stove, Refrigerator, Washer/Dryer
Heating	Forced Air, Natural Gas
Cooling	None
Has Basement	Yes
Basement	Full, Partially Finished

### **Exterior**

Exterior Features	Garden
Lot Description	Back Yard, City Lot, Few Trees, Front Yard, Garden
Roof	Asphalt Shingle
Construction	Vinyl Siding
Foundation	Poured Concrete

### **Additional Information**

Date Listed	June 27th, 2025
Days on Market	59
Zoning	R2

### **Listing Details**

Listing Office	All Peace Realty Ltd.
----------------	-----------------------

Data is supplied by Pillar 9â„¢ MLS® System. Pillar 9â„¢ is the owner of the copyright in its MLS® System. Data is deemed reliable but is not guaranteed accurate by Pillar 9â„¢. The trademarks MLS®, Multiple Listing Service® and the associated logos are owned by The Canadian Real Estate Association (CREA) and identify the quality of services provided by real estate professionals who are members of CREA. Used under license.