

# \$165,000 - 117 Centre Street, Drumheller

MLS® #A2233974

**\$165,000**

3 Bedroom, 1.00 Bathroom, 802 sqft

Residential on 0.14 Acres

Downtown, Drumheller, Alberta

Location, Location, Location! This charming detached home is perfectly situated right across from the Drumheller Arena and the world-famous Giant Dinosaur â€” giving you front-row access to the heart of the town! Featuring 3 spacious bedrooms and 1 full bathroom. Step inside to discover a functional layout with plenty of natural light, a cozy living space, and a bright kitchen ready for your personal touch. Enjoy the convenience of being walking distance to local attractions, schools, parks, and downtown amenities.

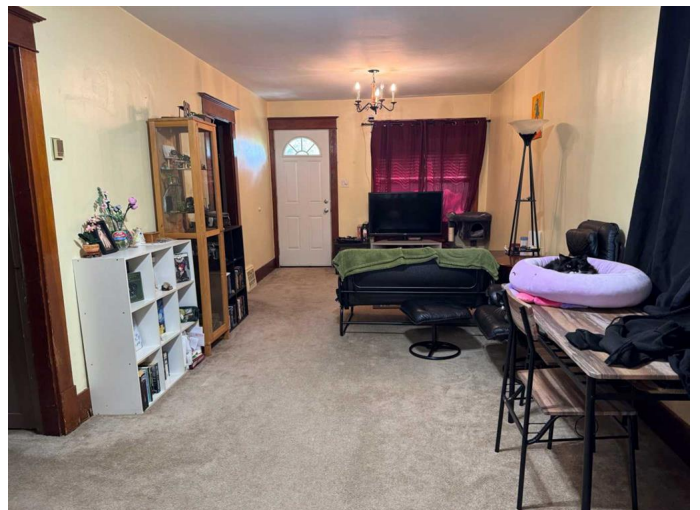
Built in 1940

## Essential Information

MLS® #	A2233974
Price	\$165,000
Bedrooms	3
Bathrooms	1.00
Full Baths	1
Square Footage	802
Acres	0.14
Year Built	1940
Type	Residential
Sub-Type	Detached
Style	Bungalow
Status	Active

## Community Information

Address 117 Centre Street



Subdivision	Downtown
City	Drumheller
County	Drumheller
Province	Alberta
Postal Code	T0J0Y4

### **Amenities**

Parking Spaces	2
Parking	Off Street, Parking Pad

### **Interior**

Interior Features	Ceiling Fan(s)
Appliances	Dryer, Electric Stove, Refrigerator, Washer, Oven
Heating	Forced Air
Cooling	None
Has Basement	Yes
Basement	Full, Unfinished

### **Exterior**

Exterior Features	None
Lot Description	Back Yard
Roof	Asphalt
Construction	Wood Frame
Foundation	Perimeter Wall

### **Additional Information**

Date Listed	June 23rd, 2025
Days on Market	11
Zoning	DT

### **Listing Details**

Listing Office	The Real Estate District
----------------	--------------------------

Data is supplied by Pillar 9â„¢ MLS® System. Pillar 9â„¢ is the owner of the copyright in its MLS® System. Data is deemed reliable but is not guaranteed accurate by Pillar 9â„¢. The trademarks MLS®, Multiple Listing Service® and the associated logos are owned by The Canadian Real Estate Association (CREA) and identify the quality of services provided by real estate professionals who are members of CREA. Used under license.