

# \$449,900 - 67 Northlands Way Ne, Medicine Hat

MLS® #A2233843

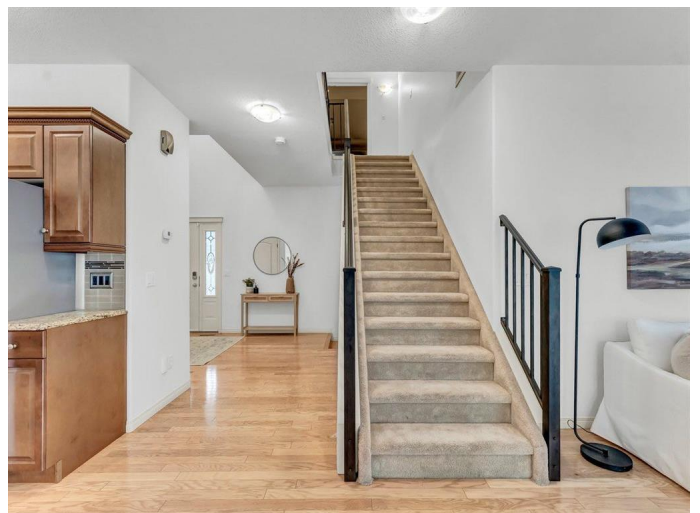
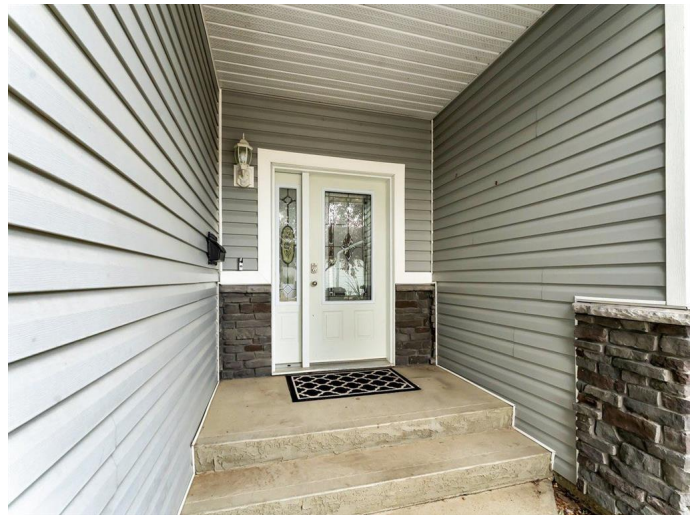
**\$449,900**

3 Bedroom, 4.00 Bathroom, 2,295 sqft

Residential on 0.00 Acres

Northeast Crescent Heights, Medicine Hat, Alberta

Welcome to 67 Northlands Way NE â€” a beautifully designed, move-in-ready home that blends functionality with comfort, all wrapped into a low maintenance lifestyle that condo living offers. Step inside and be greeted by expansive ceilings and a spacious, welcoming entryway that creates an immediate sense of openness. The main floor features an open-concept layout, enhanced by large windows that flood the space with natural light, creating a bright and inviting atmosphere throughout. The kitchen has custom cabinets, a corner pantry, granite countertops and an island with seating perfect for entertaining. The living room is cozy with a gas fireplace with built in features and a great size dining space off the back deck access finish the main area. Upstairs, youâ€™ll find three generously sized bedrooms, including a primary suite that offers easy access and a private retreat complete with a spacious ensuite featuring a jetted tub and separate showerâ€”the perfect spot to unwind. A standout theatre room is also located on the upper level, ideal for movie nights or a quiet space to relax. The fully developed lower level adds even more versatility with a home gym, full wet bar, and additional space for guests or entertaining. Outdoors, enjoy the private backyard with no rear neighbours and direct access to a scenic walking path, offering a peaceful extension of your living space. With low-maintenance landscaping, itâ€™s designed for both



relaxation and ease. This home has been thoughtfully cared for and offers the ideal mix of comfort, style, and functionality in a desirable NE location.

Built in 2004

### **Essential Information**

MLS® #	A2233843
Price	\$449,900
Bedrooms	3
Bathrooms	4.00
Full Baths	3
Half Baths	1
Square Footage	2,295
Acres	0.00
Year Built	2004
Type	Residential
Sub-Type	Row/Townhouse
Style	2 Storey, Side by Side
Status	Active

### **Community Information**

Address	67 Northlands Way Ne
Subdivision	Northeast Crescent Heights
City	Medicine Hat
County	Medicine Hat
Province	Alberta
Postal Code	T1C2A3

### **Amenities**

Amenities	None
Parking Spaces	2
Parking	Double Garage Attached, Concrete Driveway
# of Garages	2

### **Interior**

Interior Features	Ceiling Fan(s), Central Vacuum, French Door, Granite Counters, High Ceilings, Jetted Tub, Kitchen Island, Open Floorplan, Pantry, Vinyl
-------------------	---

	Windows, Walk-In Closet(s)
Appliances	Bar Fridge, Central Air Conditioner, Dishwasher, Dryer, Electric Stove, Garage Control(s), Microwave, Refrigerator, Washer, Window Coverings
Heating	Forced Air
Cooling	Central Air
Fireplace	Yes
# of Fireplaces	1
Fireplaces	Family Room, Gas
Has Basement	Yes
Basement	Finished, Full

## Exterior

Exterior Features	Private Yard
Lot Description	Landscaped, Low Maintenance Landscape, Private, Street Lighting, Underground Sprinklers, Views
Roof	Asphalt Shingle
Construction	Mixed
Foundation	Poured Concrete

## Additional Information

Date Listed	June 24th, 2025
Days on Market	10
Zoning	R-MD

## Listing Details

Listing Office	ROYAL LEPAGE COMMUNITY REALTY
----------------	-------------------------------

Data is supplied by Pillar 9â„¢ MLS® System. Pillar 9â„¢ is the owner of the copyright in its MLS® System. Data is deemed reliable but is not guaranteed accurate by Pillar 9â„¢. The trademarks MLS®, Multiple Listing Service® and the associated logos are owned by The Canadian Real Estate Association (CREA) and identify the quality of services provided by real estate professionals who are members of CREA. Used under license.