

\$574,500 - 113 Aspen Point, Strathmore

MLS® #A2233555

\$574,500

3 Bedroom, 4.00 Bathroom, 1,121 sqft

Residential on 0.11 Acres

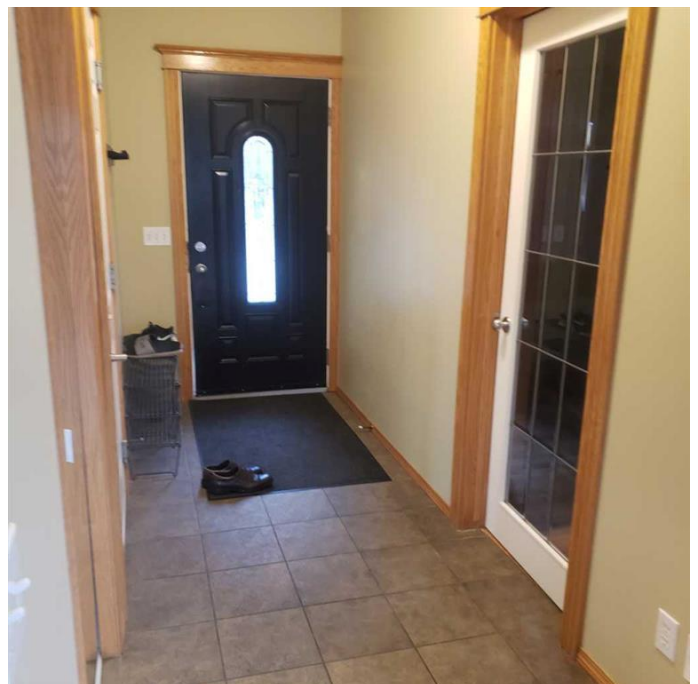
Aspen Creek, Strathmore, Alberta

GREAT WALK-OUT BUNGALOW 1120SF ABOVE GRADE+ FULL FINISHED BASEMENT IN ASPEN ESTATES STRATHMORE. 2BEDRMS + DEN ON MAIN + LIVING ROOM W/FP ,DINING AND KITCHEN AREAS . HARDWOOD FLOORING. WALK ONTO ENCLOSED DUR-A-DECK FROM MAIN FLOOR. BASEMENT HAS 2 SEPARATE LIVING QUARTERS . FAMILY ROOM, FULL BATH AND KITCHENETTE IS TENANT OCCUPIED . OTHER SIDE IS FULL BATH, GREAT ROOM COMMON LAUNDRY AREA FOR SEPARATE WASH. DOUBLE FRONT ATTACHED GARAGE. STONE/VINYL SIDING. QUICK SALE .

Built in 2004

Essential Information

MLS® #	A2233555
Price	\$574,500
Bedrooms	3
Bathrooms	4.00
Full Baths	4
Square Footage	1,121
Acres	0.11
Year Built	2004
Type	Residential
Sub-Type	Detached
Style	Bungalow
Status	Active



Community Information

Address	113 Aspen Point
Subdivision	Aspen Creek
City	Strathmore
County	Wheatland County
Province	Alberta
Postal Code	T1P0H5

Amenities

Parking Spaces	4
Parking	Double Garage Attached, Off Street
# of Garages	2

Interior

Interior Features	Bar, Ceiling Fan(s), Central Vacuum, French Door, See Remarks, Vinyl Windows, Walk-In Closet(s)
Appliances	Central Air Conditioner, Dishwasher, Electric Stove, Garage Control(s), Refrigerator, Washer/Dryer, Window Coverings
Heating	Forced Air, Natural Gas, Fireplace(s)
Cooling	Central Air
Fireplace	Yes
# of Fireplaces	1
Fireplaces	Gas
Has Basement	Yes
Basement	Finished, Full, Walk-Out, Suite

Exterior

Exterior Features	Balcony, Private Yard
Lot Description	Back Yard, Few Trees, See Remarks, Pie Shaped Lot, Sloped Down, Wetlands
Roof	Asphalt Shingle
Construction	Stone, Vinyl Siding
Foundation	Poured Concrete

Additional Information

Date Listed	June 22nd, 2025
Days on Market	2
Zoning	R1

Listing Details



Data is supplied by Pillar 9â„¢ MLSÂ® System. Pillar 9â„¢ is the owner of the copyright in its MLSÂ® System. Data is deemed reliable but is not guaranteed accurate by Pillar 9â„¢. The trademarks MLSÂ®, Multiple Listing ServiceÂ® and the associated logos are owned by The Canadian Real Estate Association (CREA) and identify the quality of services provided by real estate professionals who are members of CREA. Used under license.