

# \$1,875,000 - 1222 Salisbury Avenue Se, Calgary

MLS® #A2233116

**\$1,875,000**

0 Bedroom, 0.00 Bathroom,  
Land on 0.20 Acres

Ramsay, Calgary, Alberta

Stunning corner pie lot with 82 FOOT FRONTAGE, UNOBSTRUCTED VIEWS OF DOWNTOWN, STAMPEDE GROUNDS, THE MOUNTAINS AND WALKING DISTANCE TO ELBOW RIVER PATHWAYS. The lot has been cleared and is ready for you to build your dream home!

## Essential Information

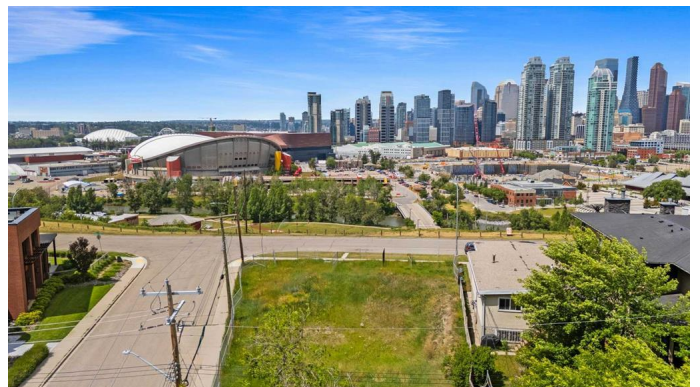
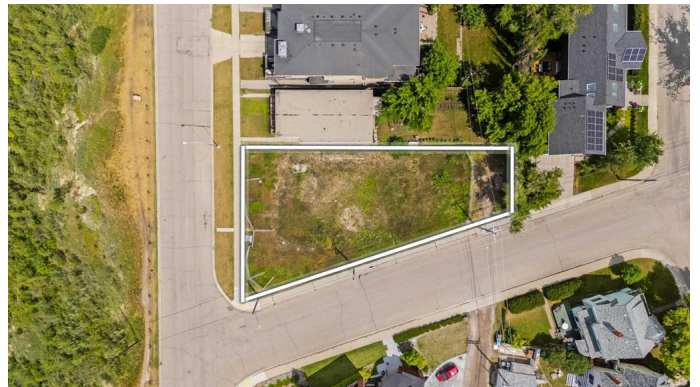
MLS® #	A2233116
Price	\$1,875,000
Bathrooms	0.00
Acres	0.20
Type	Land
Sub-Type	Residential Land
Status	Active

## Community Information

Address	1222 Salisbury Avenue Se
Subdivision	Ramsay
City	Calgary
County	Calgary
Province	Alberta
Postal Code	T2G 4J9

## Additional Information

Date Listed	June 20th, 2025
Days on Market	50
Zoning	R-CG



**Listing Details**

Listing Office                      Century 21 Bravo Realty

Data is supplied by Pillar 9â„¢ MLS® System. Pillar 9â„¢ is the owner of the copyright in its MLS® System. Data is deemed reliable but is not guaranteed accurate by Pillar 9â„¢. The trademarks MLS®, Multiple Listing Service® and the associated logos are owned by The Canadian Real Estate Association (CREA) and identify the quality of services provided by real estate professionals who are members of CREA. Used under license.