

\$404,900 - 52 Cypress Way Se, Medicine Hat

MLS® #A2230670

\$404,900

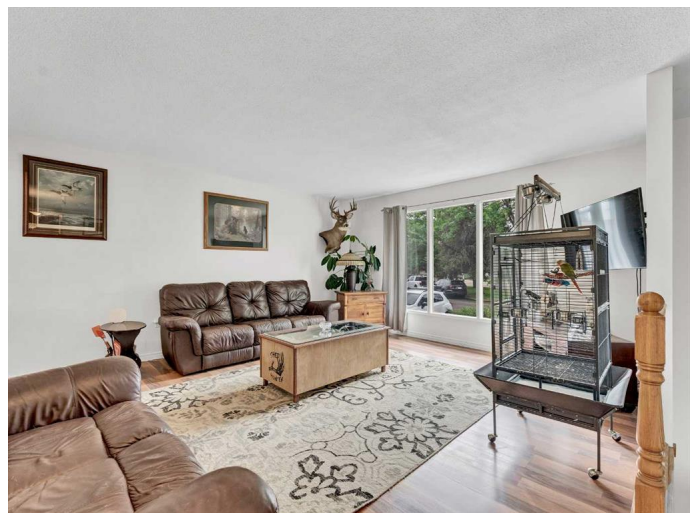
5 Bedroom, 2.00 Bathroom, 1,081 sqft

Residential on 0.14 Acres

Southview-Park Meadows, Medicine Hat, Alberta

Want to go for a swim? This move-in-ready Bi-Level has an OUTDOOR POOL ! Picture yourself after a hot summer day retreating to the cool water of your very own private swimming pool. Or, if you just want to soak a bit , you can have a nice sit in the HOT TUB. Located on a quiet Cul-de-sac close to everything (schools, shopping, restaurants , professional services) This 5 bedroom / 2 bathroom home has had many updates on the inside as well . The kitchen has been re-done , the downstairs bathroom has been completely renovated , the upstairs bathroom has been updated too! . Great layout ; There are 3 bedrooms up. The main floor kitchen / dining / living area flows together nicely , and leads out to shady covered deck overlooking a beautiful backyard with 2 sheds, a lower patio area , and an abundance of fruit trees and plants. (Plum , Cherry , Grapes , and 2 varieties of Raspberries !) The lower level has 2 additional bedrooms, a spacious family room , the combined utility / laundry room, and the second bathroom. The furnace and A/C were new in 2021, new washer and dryer in 2024 , new water heater in 2025. This large lot is also host to a detached double garage as well as a double front driveway. A very nice home in a great location with a great yard at a great price. Have a look then make this your next home !

Built in 1973



Essential Information

| | |
|----------------|-------------|
| MLS® # | A2230670 |
| Price | \$404,900 |
| Bedrooms | 5 |
| Bathrooms | 2.00 |
| Full Baths | 2 |
| Square Footage | 1,081 |
| Acres | 0.14 |
| Year Built | 1973 |
| Type | Residential |
| Sub-Type | Detached |
| Style | Bi-Level |
| Status | Active |

Community Information

| | |
|-------------|------------------------|
| Address | 52 Cypress Way Se |
| Subdivision | Southview-Park Meadows |
| City | Medicine Hat |
| County | Medicine Hat |
| Province | Alberta |
| Postal Code | T1B1G7 |

Amenities

| | |
|----------------|--|
| Parking Spaces | 4 |
| Parking | Concrete Driveway, Double Garage Detached, Garage Door Opener, Garage Faces Rear |
| # of Garages | 2 |

Interior

| | |
|-------------------|-------------------------|
| Interior Features | Ceiling Fan(s) |
| Appliances | Other |
| Heating | Forced Air, Natural Gas |
| Cooling | Central Air |
| Has Basement | Yes |
| Basement | Finished, Full |

Exterior

| | |
|-------------------|--------------------------|
| Exterior Features | Other |
| Lot Description | Back Yard, Irregular Lot |

| | |
|--------------|-----------------|
| Roof | Asphalt Shingle |
| Construction | Wood Frame |
| Foundation | Poured Concrete |

Additional Information

| | |
|----------------|-----------------|
| Date Listed | June 13th, 2025 |
| Days on Market | 2 |
| Zoning | R-LD |

Listing Details

| | |
|----------------|----------------------------|
| Listing Office | RE/MAX MEDALTA REAL ESTATE |
|----------------|----------------------------|

Data is supplied by Pillar 9â„¢ MLS® System. Pillar 9â„¢ is the owner of the copyright in its MLS® System. Data is deemed reliable but is not guaranteed accurate by Pillar 9â„¢. The trademarks MLS®, Multiple Listing Service® and the associated logos are owned by The Canadian Real Estate Association (CREA) and identify the quality of services provided by real estate professionals who are members of CREA. Used under license.