

\$495,000 - 636 11 Street S, Lethbridge

MLS® #A2227775

\$495,000

3 Bedroom, 2.00 Bathroom, 2,230 sqft

Residential on 0.19 Acres

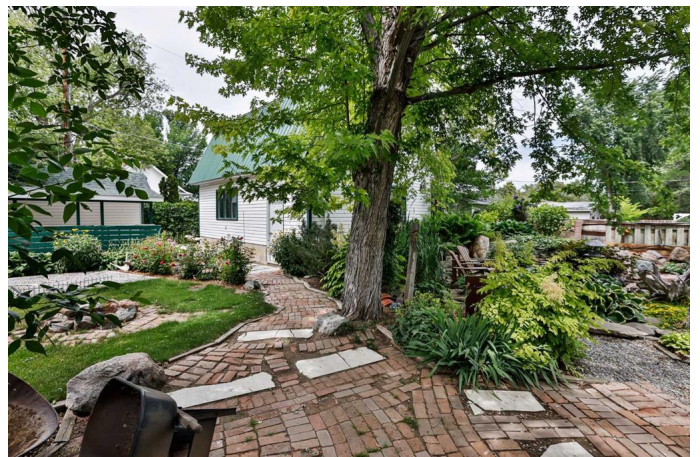
London Road, Lethbridge, Alberta

This classic character home located in the sought after neighborhood of LONDON ROAD offers timeless elegance in a mature location. Notice the front yard setback distance while sitting on the front porch or the secluded back yard from the rear deck. This home has been updated and maintained by the current owners for over 40 years. This 2.5 story residence features rich hardwood floors , intricate woodwork , many built-ins and stain glass , giving it a touch of history. This home offers plenty of space for everyone in the family. The photos reveal the many feature of this inviting property. You will appreciate the double heated garage , extensive landscaping , sitting room with gas stove ,main floor laundry , steam room in second floor bath , and updated mechanical , and more ! This home is a rare find of history , character and modern living.

Built in 1910

Essential Information

MLS® #	A2227775
Price	\$495,000
Bedrooms	3
Bathrooms	2.00
Full Baths	1
Half Baths	1
Square Footage	2,230
Acres	0.19



Year Built	1910
Type	Residential
Sub-Type	Detached
Style	2 and Half Storey
Status	Active

Community Information

Address	636 11 Street S
Subdivision	London Road
City	Lethbridge
County	Lethbridge
Province	Alberta
Postal Code	T1J 2P2

Amenities

Parking Spaces	3
Parking	Double Garage Detached
# of Garages	1

Interior

Interior Features	See Remarks
Appliances	Dishwasher, Gas Stove, Refrigerator, Washer/Dryer, Window Coverings
Heating	Forced Air, High Efficiency
Cooling	Wall Unit(s)
Fireplace	Yes
# of Fireplaces	1
Fireplaces	Gas
Has Basement	Yes
Basement	Partial, Unfinished

Exterior

Exterior Features	Private Yard
Lot Description	Back Lane, Back Yard
Roof	Asphalt Shingle
Construction	Vinyl Siding
Foundation	Poured Concrete

Additional Information

Date Listed	July 1st, 2025
-------------	----------------

Days on Market	14
Zoning	R-L(L)

Listing Details

Listing Office	RE/MAX REAL ESTATE - LETHBRIDGE
----------------	---------------------------------

Data is supplied by Pillar 9â„¢ MLS® System. Pillar 9â„¢ is the owner of the copyright in its MLS® System. Data is deemed reliable but is not guaranteed accurate by Pillar 9â„¢. The trademarks MLS®, Multiple Listing Service® and the associated logos are owned by The Canadian Real Estate Association (CREA) and identify the quality of services provided by real estate professionals who are members of CREA. Used under license.