

\$329,000 - 5117 55 Avenue, High Prairie

MLS® #A2226314

\$329,000

3 Bedroom, 2.00 Bathroom, 1,361 sqft

Residential on 0.21 Acres

NONE, High Prairie, Alberta

This 1361sqft Bi-Level features 3 bedrooms, 2 full bathroom, main floor laundry, an open floor plan and stainless steel appliances. With a full basement that is partially finished you can create the space to fit your families needs! Built in 2017 this home offers worry free, low maintenance living. Located down a beautifully tree-lined street, close to schools, the aquatic center this home is waiting for your growing family!!

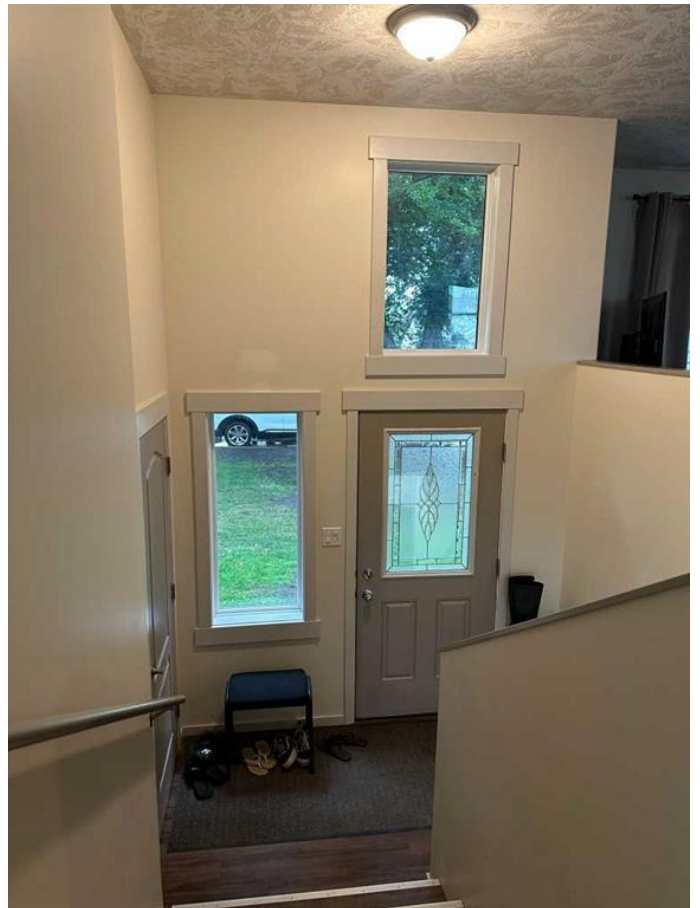
Built in 2017

Essential Information

MLS® #	A2226314
Price	\$329,000
Bedrooms	3
Bathrooms	2.00
Full Baths	2
Square Footage	1,361
Acres	0.21
Year Built	2017
Type	Residential
Sub-Type	Detached
Style	Bi-Level
Status	Active

Community Information

Address	5117 55 Avenue
Subdivision	NONE



City	High Prairie
County	Big Lakes County
Province	Alberta
Postal Code	T0G 1E0

Amenities

Parking Spaces	2
Parking	Off Street

Interior

Interior Features	Ceiling Fan(s), High Ceilings, Open Floorplan, Storage, Walk-In Closet(s), Laminate Counters
Appliances	Dishwasher, Dryer, Electric Oven, Refrigerator, Washer, Window Coverings
Heating	Forced Air, Natural Gas
Cooling	None
Has Basement	Yes
Basement	Full, Partially Finished

Exterior

Exterior Features	None
Lot Description	Back Lane, Back Yard
Roof	Asphalt Shingle
Construction	Vinyl Siding, Wood Frame
Foundation	ICF Block

Additional Information

Date Listed	May 28th, 2025
Days on Market	103
Zoning	R2

Listing Details

Listing Office	Royal LePage P.V.R. Realty
----------------	----------------------------

Data is supplied by Pillar 9â„¢ MLS® System. Pillar 9â„¢ is the owner of the copyright in its MLS® System. Data is deemed reliable but is not guaranteed accurate by Pillar 9â„¢. The trademarks MLS®, Multiple Listing Service® and the associated logos are owned by The Canadian Real Estate Association (CREA) and identify the quality of services provided by real estate professionals who are members of CREA. Used under license.