

\$225,000 - Hwy 743, Rural Northern Lights, County of

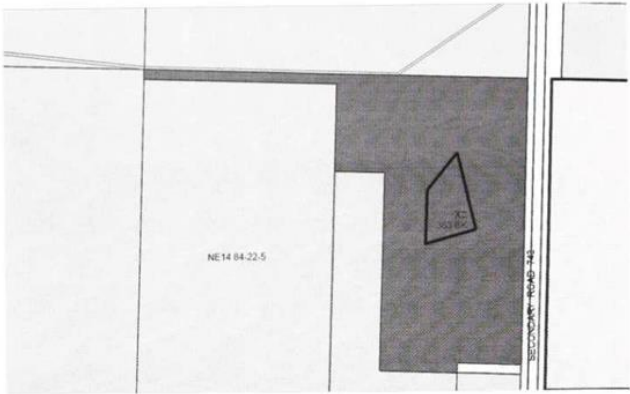
MLS® #A2226009

\$225,000

0 Bedroom, 0.00 Bathroom,
Land on 52.60 Acres

NONE, Rural Northern Lights, County of,
Alberta

Zoned M 1 General Industrial. 2 1/2 miles or 5 km North of Peace River. There is 52.6 acre Industrial lots here. Located on Hwy 743 with highway access - between Peace River and Mercer Mill you would have great access to all the amenities needed - Very low taxes currently and one of the larger parcels available in the area



Essential Information

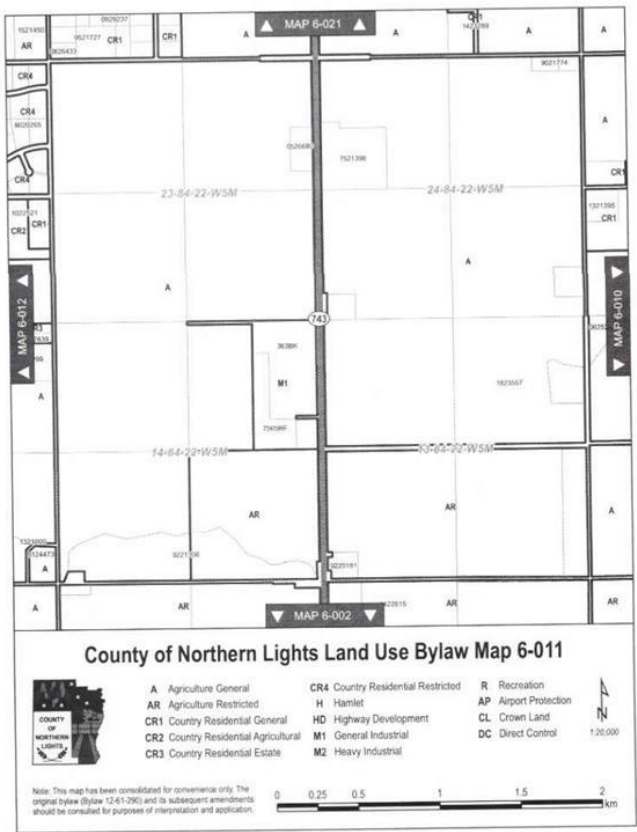
| | |
|-----------|-----------------|
| MLS® # | A2226009 |
| Price | \$225,000 |
| Bathrooms | 0.00 |
| Acres | 52.60 |
| Type | Land |
| Sub-Type | Industrial Land |
| Status | Active |

Community Information

| | |
|-------------|----------------------------------|
| Address | Hwy 743 |
| Subdivision | NONE |
| City | Rural Northern Lights, County of |
| County | Northern Lights, County of |
| Province | Alberta |
| Postal Code | T8S1S4 |

Additional Information

| | |
|-------------|----------------|
| Date Listed | May 27th, 2025 |
|-------------|----------------|



| | |
|----------------|----|
| Days on Market | 77 |
| Zoning | M1 |

Listing Details

| | |
|----------------|------------------------------------|
| Listing Office | Century 21 Town and Country Realty |
|----------------|------------------------------------|

Data is supplied by Pillar 9â„¢ MLS® System. Pillar 9â„¢ is the owner of the copyright in its MLS® System. Data is deemed reliable but is not guaranteed accurate by Pillar 9â„¢. The trademarks MLS®, Multiple Listing Service® and the associated logos are owned by The Canadian Real Estate Association (CREA) and identify the quality of services provided by real estate professionals who are members of CREA. Used under license.