

\$529,900 - 4827 Southlands Drive Se, Medicine Hat

MLS® #A2224775

\$529,900

4 Bedroom, 4.00 Bathroom, 2,083 sqft

Residential on 0.10 Acres

Southland, Medicine Hat, Alberta

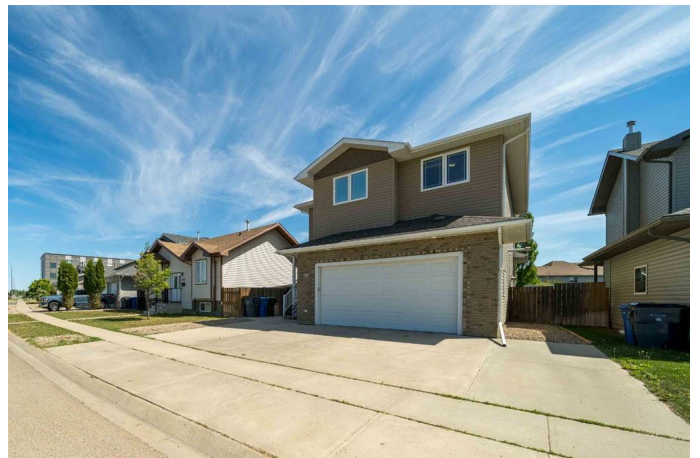
Move-In Ready in Southlands!

Welcome to this beautifully maintained and thoughtfully updated home in the heart of Southlands—perfectly located right across from a school and just minutes from parks, trails, shopping, restaurants, and major routes. With 4 bedrooms, 3.5 bathrooms, and a spacious layout, this home offers the ideal blend of comfort and functionality for families of all sizes.

Step inside to an open-concept main floor featuring a spacious kitchen with a central island and seating area that flows seamlessly into the living room. Warm hardwood floors and a cozy gas fireplace create an inviting atmosphere, perfect for relaxing or entertaining. From the living room, step out onto the covered deck and enjoy the fully fenced backyard with back lane access—ideal for outdoor gatherings or quiet evenings.

The main floor also includes a welcoming front entry, convenient half-bath, laundry room with washer and dryer (only 1.5 years old), and direct access to the heated double garage. The front door and side garage door is equipped with smart locks for modern convenience.

Upstairs, you'll find a versatile bonus room—great for a playroom, office, or entertainment area—a full 4-piece bathroom,



and three spacious bedrooms. The primary suite offers plenty of space for large furniture and a sitting area, along with a generous walk-in closet and a luxurious 5-piece ensuite featuring double sinks, a large shower, and a relaxing jacuzzi tub. One of the additional bedrooms also includes a walk-in closet for extra storage.

The basement has been completely redone with permits and features a large living space, one bedroom, a full 4-piece bathroom, a utility room, and additional storageâ€”making it a great space for guests or extended family.

Recent upgrades include a sliding screen door to the deck as well as three toilets have been replaced. This home has a maintenance-free front yard, and a newer roof with 30-year shingles and a hot water tankâ€”both replaced just four years ago. The large driveway offers space for up to four vehicles.

This home has been lovingly cared for and is truly move-in ready.

Built in 2007

Essential Information

MLS® #	A2224775
Price	\$529,900
Bedrooms	4
Bathrooms	4.00
Full Baths	3
Half Baths	1
Square Footage	2,083
Acres	0.10
Year Built	2007
Type	Residential
Sub-Type	Detached
Style	2 Storey

Status	Active
--------	--------

Community Information

Address	4827 Southlands Drive Se
Subdivision	Southland
City	Medicine Hat
County	Medicine Hat
Province	Alberta
Postal Code	T1B 0B9

Amenities

Parking Spaces	6
Parking	Concrete Driveway, Double Garage Attached, Driveway, Garage Door Opener, Garage Faces Front, Heated Garage
# of Garages	2

Interior

Interior Features	Double Vanity, Kitchen Island, Open Floorplan, Pantry, Storage, Tray Ceiling(s), Vinyl Windows, Walk-In Closet(s)
Appliances	Central Air Conditioner, Dishwasher, Microwave, Refrigerator, Stove(s), Washer/Dryer, Window Coverings
Heating	Fireplace(s), Forced Air
Cooling	Central Air
Fireplace	Yes
# of Fireplaces	1
Fireplaces	Gas
Has Basement	Yes
Basement	Finished, Full

Exterior

Exterior Features	Other
Lot Description	Back Lane, Back Yard, City Lot, Front Yard, Landscaped, Lawn, Low Maintenance Landscape, Rectangular Lot, Street Lighting
Roof	Asphalt Shingle
Construction	Brick, Concrete, Vinyl Siding, Wood Frame
Foundation	Poured Concrete

Additional Information

Date Listed	May 28th, 2025
Days on Market	3

Zoning

R-LD

Listing Details

Listing Office

RIVER STREET REAL ESTATE

Data is supplied by Pillar 9â„¢ MLS® System. Pillar 9â„¢ is the owner of the copyright in its MLS® System. Data is deemed reliable but is not guaranteed accurate by Pillar 9â„¢. The trademarks MLS®, Multiple Listing Service® and the associated logos are owned by The Canadian Real Estate Association (CREA) and identify the quality of services provided by real estate professionals who are members of CREA. Used under license.