

\$249,500 - 2501, 221 6 Avenue Se, Calgary

MLS® #A2224589

\$249,500

1 Bedroom, 1.00 Bathroom, 708 sqft

Residential on 0.00 Acres

Downtown Commercial Core, Calgary, Alberta

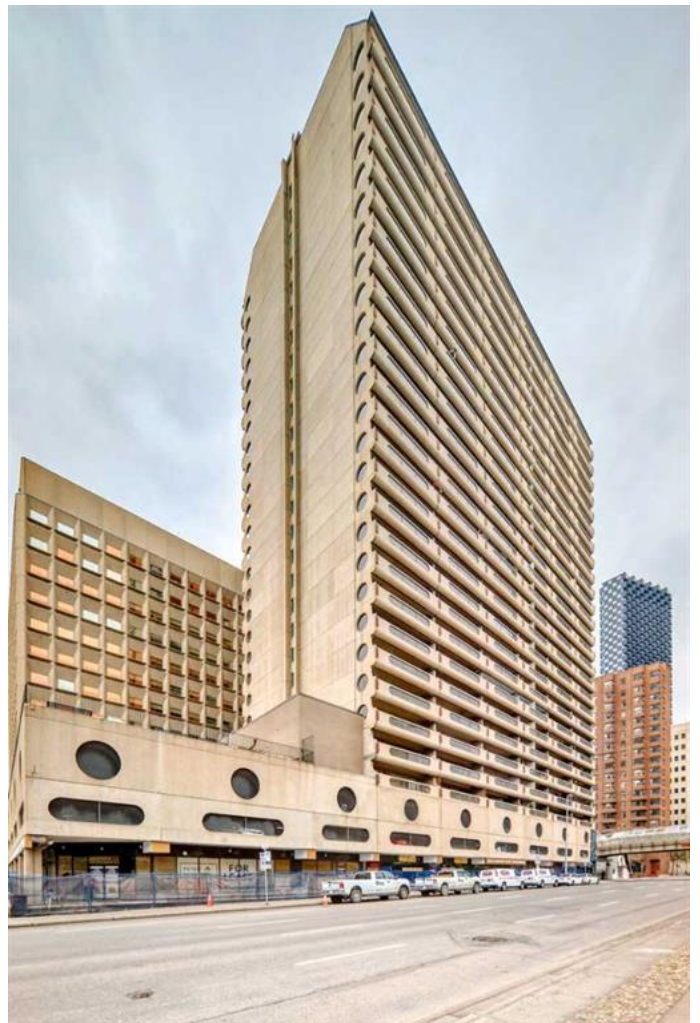
Enjoy the comfort of living in this CORNER CONDO UNIT at the ROCKY MOUNTAIN COURT in DOWNTOWN CALGARY with wide view of the City from the 25th Floor. This unit has a HEATED GARAGE, an advantage of owning one of the units on the upper floor. Just a step away from the Train Station, top rated restaurants, cafes, Shopping Centre, and few blocks away from the Prince's Island Park. The unit offers an open concept living with large windows which is perfect for entertaining visitors. This one bedroom unit is ideal for professionals, students or investors.

Built in 1980

Essential Information

MLS® #	A2224589
Price	\$249,500
Bedrooms	1
Bathrooms	1.00
Full Baths	1
Square Footage	708
Acres	0.00
Year Built	1980
Type	Residential
Sub-Type	Apartment
Style	Single Level Unit
Status	Active

Community Information



Address	2501, 221 6 Avenue Se
Subdivision	Downtown Commercial Core
City	Calgary
County	Calgary
Province	Alberta
Postal Code	T2G 0G4

Amenities

Amenities	Elevator(s), Secured Parking
Parking Spaces	1
Parking	Heated Garage, Underground

Interior

Interior Features	Storage
Appliances	Electric Stove, Refrigerator, Portable Dishwasher
Heating	Central
Cooling	None
# of Stories	29

Exterior

Exterior Features	Balcony
Construction	Concrete

Additional Information

Date Listed	June 7th, 2025
Days on Market	41
Zoning	CR20-C20/R20
HOA Fees Freq.	ANN

Listing Details

Listing Office	Real Estate Professionals Inc.
----------------	--------------------------------

Data is supplied by Pillar 9â„¢ MLS® System. Pillar 9â„¢ is the owner of the copyright in its MLS® System. Data is deemed reliable but is not guaranteed accurate by Pillar 9â„¢. The trademarks MLS®, Multiple Listing Service® and the associated logos are owned by The Canadian Real Estate Association (CREA) and identify the quality of services provided by real estate professionals who are members of CREA. Used under license.