

\$634,900 - 628 Maryvale Way Ne, Calgary

MLS® #A2220137

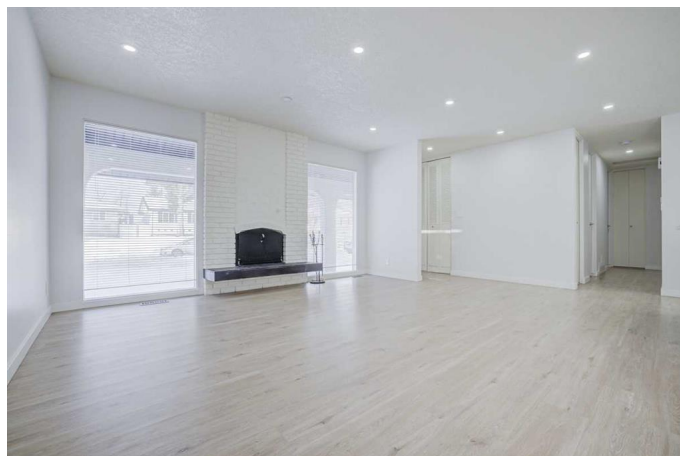
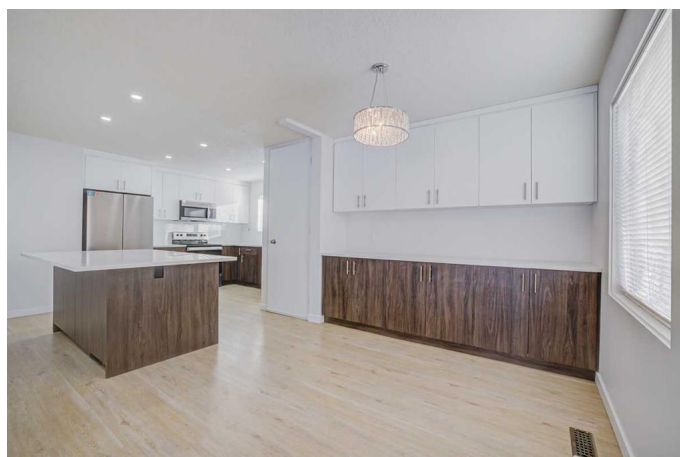
\$634,900

5 Bedroom, 3.00 Bathroom, 1,121 sqft

Residential on 0.13 Acres

Marlborough, Calgary, Alberta

| RENOVATED | 5 BEDS | 2.5 BATHS | 2 KITCHENS | SEPARATE ENTRANCE | DOUBLE DETACHED GARAGE | Welcome to this renovated bungalow located in the desirable community of Marlborough! This bright and modern home offers 5 bedrooms, 2.5 bathrooms, 2 kitchens, and a separate entrance—perfect for extended family living or investors. Step inside to discover stylish vinyl plank flooring throughout and an open-concept main floor flooded with natural light. The spacious living area flows into a beautifully designed kitchen featuring sleek cabinetry, a large island with quartz countertops, and a cozy dining area. The main level includes 3 bedrooms, including a primary with its own 2-piece ensuite, and a full 4-piece bathroom. Downstairs, the fully developed basement boasts a second kitchen, open living space, 2 more bedrooms, a full bathroom. Enjoy outdoor living on the large deck, with a double detached garage providing ample parking. Close to schools, shopping, parks, and transit—this home has it all. Book your showing today!



Built in 1971

Essential Information

MLS® # A2220137

Price \$634,900

Bedrooms 5

Bathrooms	3.00
Full Baths	2
Half Baths	1
Square Footage	1,121
Acres	0.13
Year Built	1971
Type	Residential
Sub-Type	Detached
Style	Bungalow
Status	Active

Community Information

Address	628 Maryvale Way Ne
Subdivision	Marlborough
City	Calgary
County	Calgary
Province	Alberta
Postal Code	T2A 2V7

Amenities

Parking Spaces	2
Parking	Double Garage Detached
# of Garages	2

Interior

Interior Features	See Remarks
Appliances	Dryer, Washer
Heating	Forced Air
Cooling	None
Fireplace	Yes
# of Fireplaces	1
Fireplaces	Wood Burning
Has Basement	Yes
Basement	Exterior Entry, Finished, Full, Suite

Exterior

Exterior Features	Other
Lot Description	Back Lane, Rectangular Lot
Roof	Asphalt Shingle

Construction	Wood Frame
Foundation	Poured Concrete

Additional Information

Date Listed	May 11th, 2025
Days on Market	8
Zoning	R-CG

Listing Details

Listing Office	eXp Realty
----------------	------------

Data is supplied by Pillar 9â„¢ MLS® System. Pillar 9â„¢ is the owner of the copyright in its MLS® System. Data is deemed reliable but is not guaranteed accurate by Pillar 9â„¢. The trademarks MLS®, Multiple Listing Service® and the associated logos are owned by The Canadian Real Estate Association (CREA) and identify the quality of services provided by real estate professionals who are members of CREA. Used under license.