

\$449,900 - 6025 88a Street, Grande Prairie

MLS® #A2218822

\$449,900

5 Bedroom, 3.00 Bathroom, 1,160 sqft

Residential on 0.11 Acres

Countryside South., Grande Prairie, Alberta

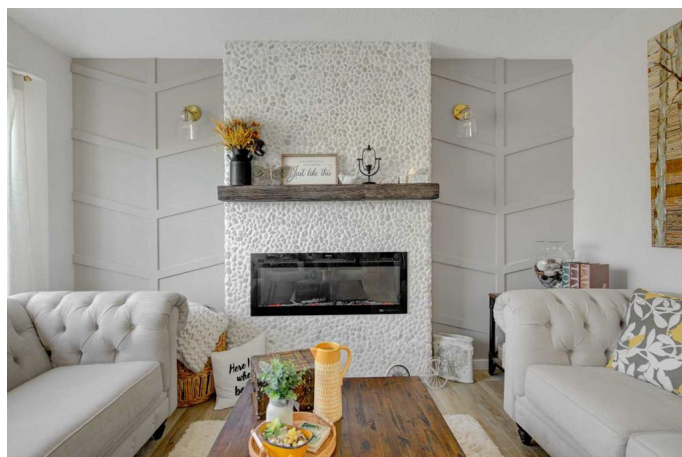
This beautifully upgraded, fully developed bi-level home offers 5 spacious bedrooms and is perfectly situated on a desirable corner lot near a tranquil park. Ideal for families, the home features a bright and open layout with large windows that fill the space with natural light. The primary bedroom includes a private ensuite, offering a relaxing retreat with modern finishes.

You'll love the numerous upgrades throughout the home, including updated flooring, stylish lighting, sleek countertops, and contemporary fixtures. The kitchen is both functional and elegant, ideal for entertaining or daily family life, with upgraded appliances including a fridge with water features. A large double garage provides ample parking and storage, while the landscaped yard enhances curb appeal and outdoor enjoyment. Located just steps from a park, this property blends comfort, style, and convenience in one inviting package.

Built in 2002

Essential Information

MLS® #	A2218822
Price	\$449,900
Bedrooms	5
Bathrooms	3.00
Full Baths	3



Square Footage	1,160
Acres	0.11
Year Built	2002
Type	Residential
Sub-Type	Detached
Style	Bi-Level
Status	Active

Community Information

Address	6025 88a Street
Subdivision	Countryside South.
City	Grande Prairie
County	Grande Prairie
Province	Alberta
Postal Code	T8W 2S5

Amenities

Parking Spaces	5
Parking	Double Garage Attached
# of Garages	2

Interior

Interior Features	Laminate Counters
Appliances	Dishwasher, Dryer, Electric Stove, Refrigerator, Washer, Window Coverings
Heating	Forced Air
Cooling	Central Air
Fireplace	Yes
# of Fireplaces	1
Fireplaces	Gas
Has Basement	Yes
Basement	Finished, Full

Exterior

Exterior Features	Lighting
Lot Description	Corner Lot
Roof	Asphalt Shingle
Construction	Wood Frame
Foundation	Poured Concrete

Additional Information

Date Listed	May 7th, 2025
Days on Market	4
Zoning	RS

Listing Details

Listing Office	Sutton Group Grande Prairie Professionals
----------------	---

Data is supplied by Pillar 9â„¢ MLS® System. Pillar 9â„¢ is the owner of the copyright in its MLS® System. Data is deemed reliable but is not guaranteed accurate by Pillar 9â„¢. The trademarks MLS®, Multiple Listing Service® and the associated logos are owned by The Canadian Real Estate Association (CREA) and identify the quality of services provided by real estate professionals who are members of CREA. Used under license.