

# \$218,000 - 19, 1915 18 Avenue N, Lethbridge

MLS® #A2217022

## \$218,000

3 Bedroom, 2.00 Bathroom, 991 sqft  
Residential on 0.00 Acres

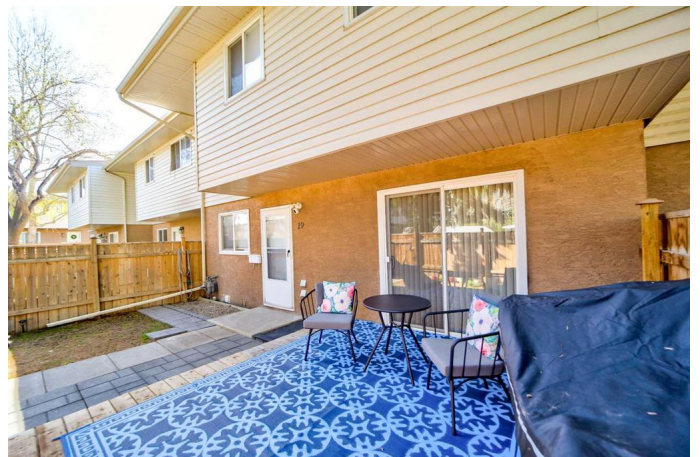
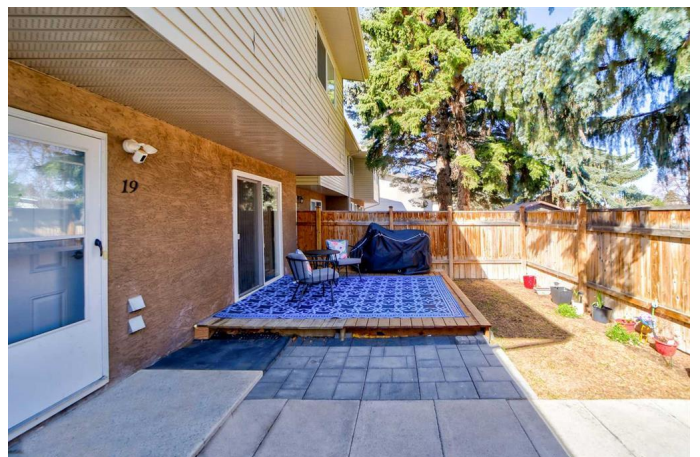
Winston Churchill, Lethbridge, Alberta

Welcome to this beautifully updated 3-bedroom, 2-storey townhouse-style condo that blends comfort, style, and practicality. Updated from top to bottom, this spacious home features a partially finished basement, upgraded appliances, new flooring, new paint and a wide range of thoughtful enhancements throughout.

The home offers a convenient and functional floor plan, with remote-controlled ceiling fan/lights in all bedrooms, and a standout kitchen featuring two stunning light fixtures that add a touch of sophistication and modern finish and a double kitchen sink with an upgraded kitchen faucet. The bathrooms have been updatedâ€”including the addition of a second half bathroom equipped with premium, high-end toilets and stylish new lighting with plumbing ready to install a shower.

A dedicated laundry room includes a newly added utility sink area for added function, while the partially finished basement provides extra space for relaxing, entertaining, or working from home.

Outside, you'll appreciate a private, fenced, and landscaped yard with an extended deck â€”perfect for kids, pets, or quiet evenings. One parking stall included with an ample of street parking and the location is unbeatable: just steps from parks, a playground, city pool, city ice rink, schools, shopping, tennis courts,



and scenic walking/bike paths and close to public transit.

This move-in-ready gem offers the ideal mix of modern living and neighborhood charm.

Homes like this donâ€™t stay on the market for longâ€”schedule your private viewing today before itâ€™s gone!

Built in 1977

**Essential Information**

MLS® #	A2217022
Price	\$218,000
Bedrooms	3
Bathrooms	2.00
Full Baths	1
Half Baths	1
Square Footage	991
Acres	0.00
Year Built	1977
Type	Residential
Sub-Type	Row/Townhouse
Style	2 Storey
Status	Active

**Community Information**

Address	19, 1915 18 Avenue N
Subdivision	Winston Churchill
City	Lethbridge
County	Lethbridge
Province	Alberta
Postal Code	T1H4V6

**Amenities**

Amenities	Parking, Trash
Parking Spaces	1
Parking	Alley Access, Assigned, Off Street, Stall, Asphalt, On Street

**Interior**

Interior Features	Ceiling Fan(s), Laminate Counters, No Smoking Home
Appliances	Microwave Hood Fan, Refrigerator, Stove(s), Washer/Dryer
Heating	Forced Air, Natural Gas
Cooling	None
Has Basement	Yes
Basement	Partial, Partially Finished

## Exterior

Exterior Features	Private Yard
Lot Description	Front Yard, Landscaped, Lawn
Roof	Asphalt Shingle
Construction	Stucco, Vinyl Siding
Foundation	Poured Concrete

## Additional Information

Date Listed	May 3rd, 2025
Days on Market	2
Zoning	R-60

## Listing Details

Listing Office	Onyx Realty Ltd.
----------------	------------------

Data is supplied by Pillar 9â„¢ MLS® System. Pillar 9â„¢ is the owner of the copyright in its MLS® System. Data is deemed reliable but is not guaranteed accurate by Pillar 9â„¢. The trademarks MLS®, Multiple Listing Service® and the associated logos are owned by The Canadian Real Estate Association (CREA) and identify the quality of services provided by real estate professionals who are members of CREA. Used under license.