

\$439,900 - 18 Westview Place, Taber

MLS® #A2216009

\$439,900

4 Bedroom, 2.00 Bathroom, 1,020 sqft

Residential on 0.10 Acres

NONE, Taber, Alberta

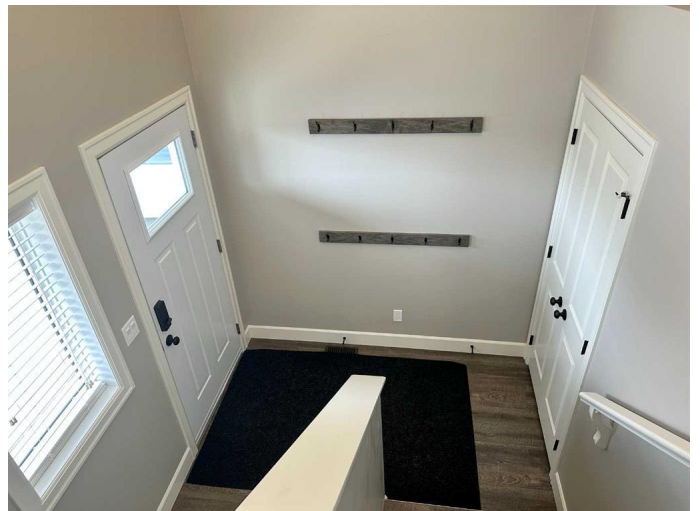
Welcome to 18 Westview place. Located just steps away from Coulee Medical Clinic, Coulee Cafe, the hospital, the golf course and a park with walking path is this modern style bi-level home. This home features 2 + 2 bedrooms, 2 full bathrooms, vaulted ceilings, a west facing deck, AC for your comfort and under ground sprinklers! The open concept makes entertaining a breeze and the fully finished basement with large windows, gives the extra space always needed. A fenced yard will keep pets in and the detached heated garage with floor drain backs onto a paved alley. Will you be this homes new family?

Built in 2017

Essential Information

MLS® #	A2216009
Price	\$439,900
Bedrooms	4
Bathrooms	2.00
Full Baths	2
Square Footage	1,020
Acres	0.10
Year Built	2017
Type	Residential
Sub-Type	Detached
Style	Bi-Level
Status	Active

Community Information



Address	18 Westview Place
Subdivision	NONE
City	Taber
County	Taber, M.D. of
Province	Alberta
Postal Code	T1G 0C8

Amenities

Parking Spaces	4
Parking	Single Garage Detached
# of Garages	2

Interior

Interior Features	See Remarks
Appliances	See Remarks
Heating	Forced Air
Cooling	Central Air
Has Basement	Yes
Basement	Finished, Full

Exterior

Exterior Features	None
Lot Description	Underground Sprinklers
Roof	Asphalt Shingle
Construction	Cement Fiber Board
Foundation	Poured Concrete

Additional Information

Date Listed	May 1st, 2025
Days on Market	1
Zoning	R-2

Listing Details

Listing Office	RE/MAX REAL ESTATE - LETHBRIDGE (TABER)
----------------	---

Data is supplied by Pillar 9â„¢ MLS® System. Pillar 9â„¢ is the owner of the copyright in its MLS® System. Data is deemed reliable but is not guaranteed accurate by Pillar 9â„¢. The trademarks MLS®, Multiple Listing Service® and the associated logos are owned by The Canadian Real Estate Association (CREA) and identify the quality of services provided by real estate professionals who are members of CREA. Used under license.