

\$599,900 - 62 Sunwood Crescent Sw, Medicine Hat

MLS® #A2215932

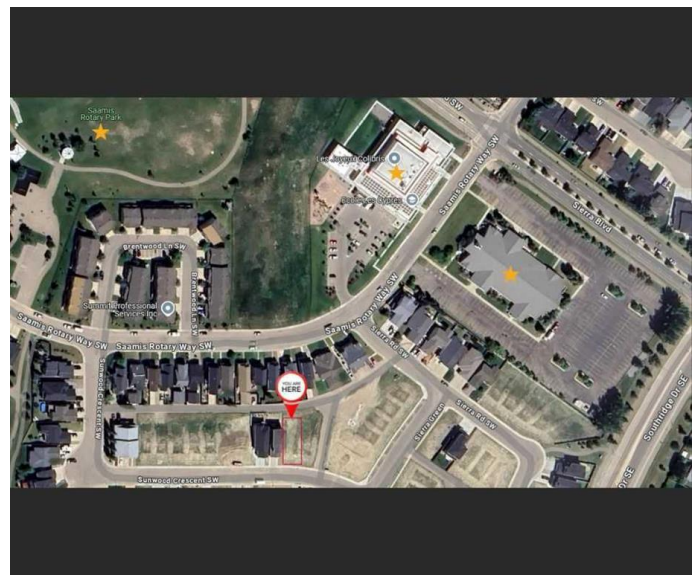
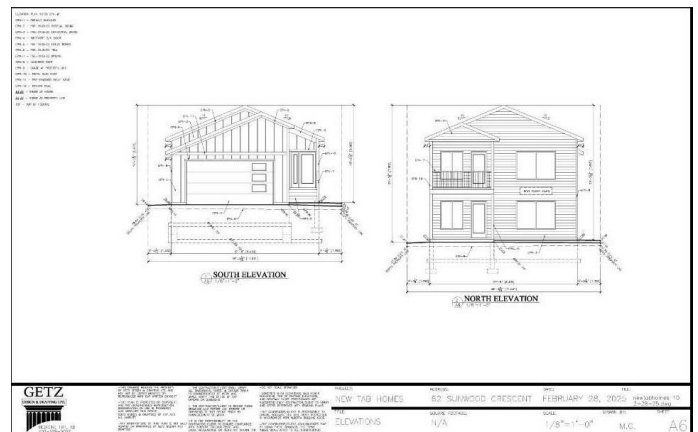
\$599,900

3 Bedroom, 3.00 Bathroom, 1,099 sqft
Residential on 0.10 Acres

SW Southridge, Medicine Hat, Alberta

Donâ€™t let this chance pass; be the first to make this lovely new walkout bungalow your home. Built by New Tab Homes Ltd. and DP76 Construction, this thoughtfully designed property blends modern style with practical functionality. With an expected completion date of October 2025, there is still time to personalize the finishes to reflect your own style and preferences. Offering 1,099 square feet of beautifully planned living space, the open-concept layout creates a bright and welcoming atmosphere. The kitchen, dining, and livingroom areas are seamlessly connected, perfect for both everyday living and entertaining. The kitchen is equipped with a large center island, abundant counter space, and a convenient corner pantry. Patio door off the dinning room lead you to the covered balcony that overlooks the yard. The main floor also includes a laundry room, a two-piece guest bathroom, and a well-appointed primary bedroom featuring a walk-in closet and a luxurious 4 piece ensuite. Downstairs, the fully developed walkout basement will offer a large family room with direct access to a covered patio, 2 additional bedrooms, and a full 4 piece bathroom. A double attached garage and a spacious driveway ensure plenty of parking for your family and guests. ** RMS square footage is based on builder plans. Pictures are "similar to" a previous build.**

Built in 2025



Essential Information

| | |
|----------------|-------------|
| MLS® # | A2215932 |
| Price | \$599,900 |
| Bedrooms | 3 |
| Bathrooms | 3.00 |
| Full Baths | 2 |
| Half Baths | 1 |
| Square Footage | 1,099 |
| Acres | 0.10 |
| Year Built | 2025 |
| Type | Residential |
| Sub-Type | Detached |
| Style | Bungalow |
| Status | Active |

Community Information

| | |
|-------------|------------------------|
| Address | 62 Sunwood Crescent Sw |
| Subdivision | SW Southridge |
| City | Medicine Hat |
| County | Medicine Hat |
| Province | Alberta |
| Postal Code | T1B 0R5 |

Amenities

| | |
|----------------|----------------------------------|
| Parking Spaces | 4 |
| Parking | Double Garage Attached, Driveway |
| # of Garages | 2 |

Interior

| | |
|-------------------|--|
| Interior Features | Kitchen Island, Pantry, Storage, Walk-In Closet(s) |
| Appliances | Central Air Conditioner |
| Heating | Forced Air, Natural Gas |
| Cooling | Central Air |
| Fireplace | Yes |
| # of Fireplaces | 1 |
| Fireplaces | Electric |
| Has Basement | Yes |
| Basement | Full, Walk-Out |

Exterior

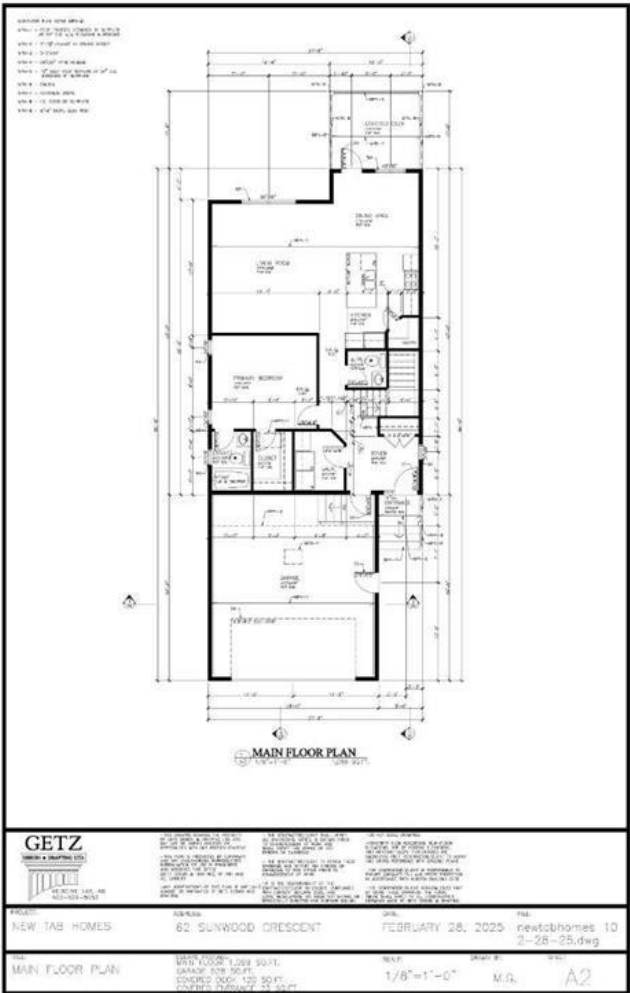
Exterior Features None
Lot Description See Remarks
Roof Asphalt Shingle
Construction Vinyl Siding
Foundation Poured Concrete

Additional Information

Date Listed April 29th, 2025
Days on Market 47
Zoning R-LD

Listing Details

Listing Office ROYAL LEPAGE COMMUNITY



Data is supplied by Pillar 9â„¢ MLSÂ® System. Pillar 9â„¢ is the owner of the copyright in its MLSÂ® System. Data is deemed reliable but is not guaranteed accurate by Pillar 9â„¢. The trademarks MLSÂ®, Multiple Listing ServiceÂ® and the associated logos are owned by The Canadian Real Estate Association (CREA) and identify the quality of services provided by real estate professionals who are members of CREA. Used under license.