

\$195,000 - 9916 82 Street, Peace River

MLS® #A2214722

\$195,000

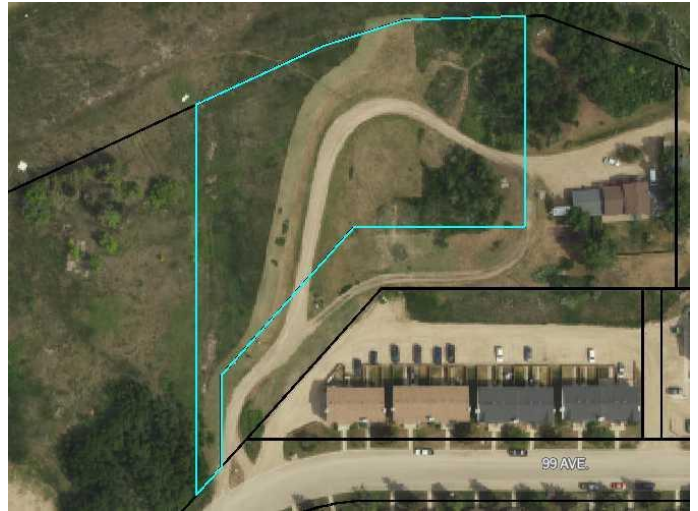
0 Bedroom, 0.00 Bathroom,
Land on 2.02 Acres

Rolling Hills., Peace River, Alberta

Discover a fantastic opportunity to build your dream home or investment property on this 2.02-acre lot on the desirable west side of Peace River minutes away from the large shopping centres. This property offers breathtaking views overlooking the Peace River Valley with a northern exposure down the river, perfect for enjoying stunning sunsets and serene mornings. Located at 9916 82 St Peace River, this 2.02 Acre lot is zoned Single-Family Residential but with potential for multi-family development as it borders a 39 unit townhouse complex. Conveniently, water and sewer services are available up to the property line. The current zoning is Single-Family Residential, but the location and size also make it a prime candidate for multi-family development, potentially accommodating up to 4 or 6+ units. This lot is ideal for those seeking a peaceful retreat or an investment opportunity with easy access to the amenities of Peace River.

Essential Information

MLS® #	A2214722
Price	\$195,000
Bathrooms	0.00
Acres	2.02
Type	Land
Sub-Type	Residential Land
Status	Active



Community Information

Address	9916 82 Street
Subdivision	Rolling Hills.
City	Peace River
County	Peace No. 135, M.D. of
Province	Alberta
Postal Code	T8S1S4

Additional Information

Date Listed	April 22nd, 2025
Days on Market	125
Zoning	R

Listing Details

Listing Office	Century 21 Town and Country Realty
----------------	------------------------------------

Data is supplied by Pillar 9â„¢ MLS® System. Pillar 9â„¢ is the owner of the copyright in its MLS® System. Data is deemed reliable but is not guaranteed accurate by Pillar 9â„¢. The trademarks MLS®, Multiple Listing Service® and the associated logos are owned by The Canadian Real Estate Association (CREA) and identify the quality of services provided by real estate professionals who are members of CREA. Used under license.