

\$450,000 - Lake Lots Starlight Place, Rural

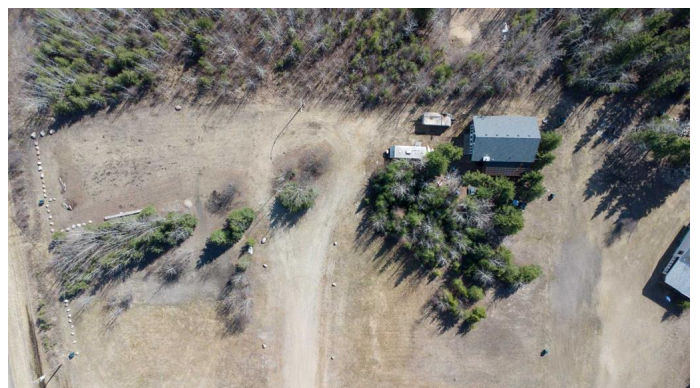
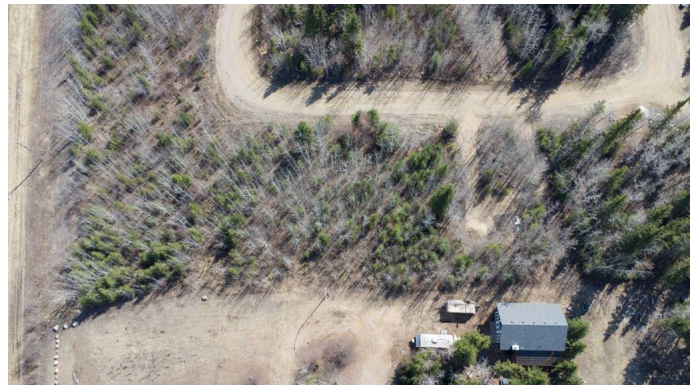
MLS® #A2213752

\$450,000

0 Bedroom, 0.00 Bathroom,
Land on 2.10 Acres

NONE, Rural, Saskatchewan

\$450,000 is the required starting price/minimum opening offer for this package of eight individually titled lake lots to be sold by Progressive Tender, with all initial offers opened Noon, Tuesday June 17, 2025. Located in the picturesque Resort Village of Kivimaa - Moonlight Bay on the shores of Turtle Lake, SK, these developed lots "1,2,3,4,7&8 Starlight Place plus 9&10 Kivimaa Drive all have natural gas and underground power to the boundary. In addition, there is water well on Lot 9 servicing both it and Lot 10. Lot 10 has a 1,728 sq ft building on full basement but is currently vacant. This is a great opportunity for investors to purchase at wholesale value to sell at retail, or to further develop. The family ownership group, the original developers, have chosen to liquidate these parcels in support of their estate planning. Village administration reports close to 240 cabins, two boat launches, fire station, public playground, and a pickle ball court (under construction). Current residents were drawn to area by its beauty and access to the year-round recreation opportunities presented by the lake and adjoining Meadow Lake Provincial Forest. Please contact the Listing Office for a detailed information package and website outlining mandatory offer requirements.



Essential Information

| | |
|-----------|--------------|
| MLS® # | A2213752 |
| Price | \$450,000 |
| Bathrooms | 0.00 |
| Acres | 2.10 |
| Type | Land |
| Sub-Type | Recreational |
| Status | Active |

Community Information

| | |
|-------------|---------------------------|
| Address | Lake Lots Starlight Place |
| Subdivision | NONE |
| City | Rural |
| County | Saskatchewan |
| Province | Saskatchewan |
| Postal Code | S9X 1E6 |

Additional Information

| | |
|----------------|---------------|
| Date Listed | May 7th, 2025 |
| Days on Market | 50 |
| Zoning | REC |

Listing Details

| | |
|----------------|------------------------|
| Listing Office | RE/MAX OF LLOYDMINSTER |
|----------------|------------------------|

Data is supplied by Pillar 9â„¢ MLS® System. Pillar 9â„¢ is the owner of the copyright in its MLS® System. Data is deemed reliable but is not guaranteed accurate by Pillar 9â„¢. The trademarks MLS®, Multiple Listing Service® and the associated logos are owned by The Canadian Real Estate Association (CREA) and identify the quality of services provided by real estate professionals who are members of CREA. Used under license.