

\$85,000 - 52 Maple Estates, Picture Butte

MLS® #A2213330

\$85,000

2 Bedroom, 1.00 Bathroom, 896 sqft

Mobile on 0.00 Acres

NONE, Picture Butte, Alberta

Upgraded 2 bedroom mobile home that received a complete overhaul in 2009. Rebuilt with 2x4 walls, new electrical, upgraded insulation, drywalled, new windows, completely refinished interior, as well as new roof, siding and soffit fascia on the exterior. Recent upgrades include a new roof in 2021 as well as the siding and fascia on the North and West side. The lot fee of \$360/month includes water, sewer and garbage. For more information or a viewing call your favorite realtor.

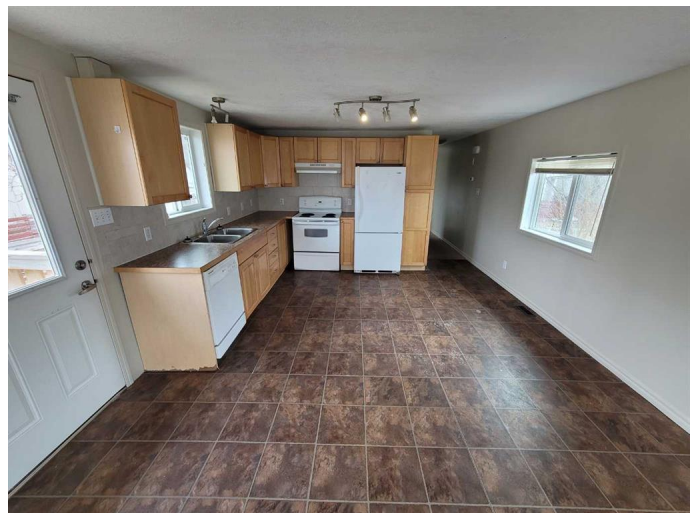
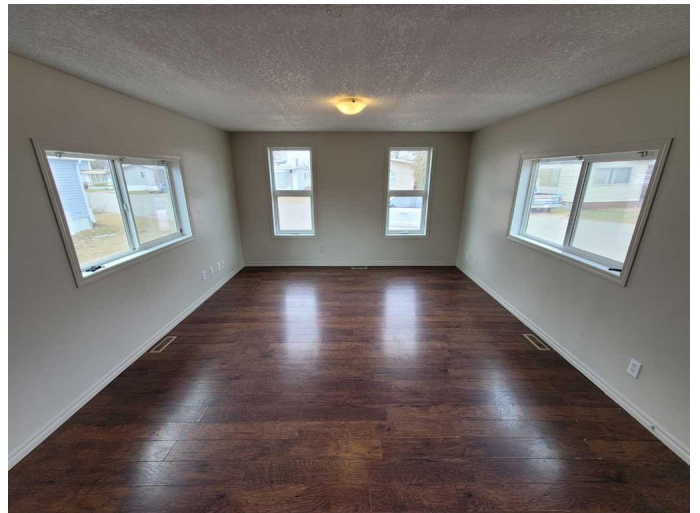
Built in 1978

Essential Information

MLS® #	A2213330
Price	\$85,000
Bedrooms	2
Bathrooms	1.00
Full Baths	1
Square Footage	896
Acres	0.00
Year Built	1978
Type	Mobile
Sub-Type	Mobile
Style	Single Wide Mobile Home
Status	Active

Community Information

Address 52 Maple Estates



Subdivision	NONE
City	Picture Butte
County	Lethbridge County
Province	Alberta
Postal Code	T0K1V0

Amenities

Parking Spaces	2
Parking	Off Street

Interior

Appliances	Dishwasher, Electric Stove, Refrigerator, Washer/Dryer
Heating	Forced Air

Exterior

Exterior Features	Private Yard
Roof	Asphalt Shingle
Foundation	None

Additional Information

Date Listed	April 19th, 2025
Days on Market	10

Listing Details

Listing Office	Century 21 Foothills South Real Estate
----------------	--

Data is supplied by Pillar 9â„¢ MLS® System. Pillar 9â„¢ is the owner of the copyright in its MLS® System. Data is deemed reliable but is not guaranteed accurate by Pillar 9â„¢. The trademarks MLS®, Multiple Listing Service® and the associated logos are owned by The Canadian Real Estate Association (CREA) and identify the quality of services provided by real estate professionals who are members of CREA. Used under license.