

\$709,000 - 362 Quarry Park Boulevard Se, Calgary

MLS® #A2212143

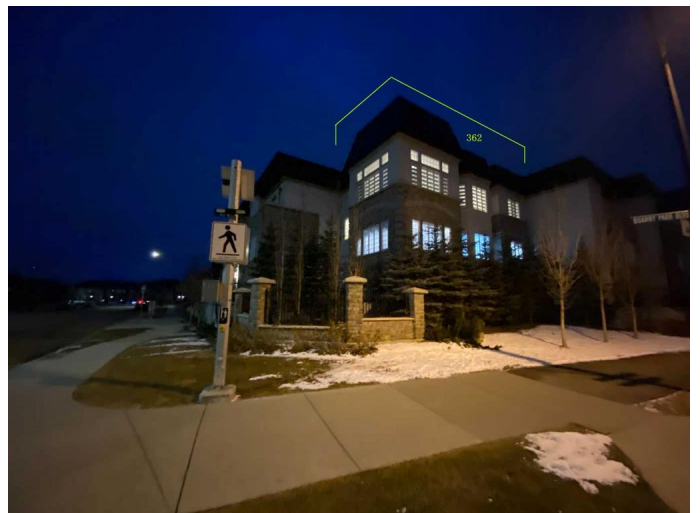
\$709,000

4 Bedroom, 3.00 Bathroom, 1,822 sqft

Residential on 0.00 Acres

Douglasdale/Glen, Calgary, Alberta

Welcome to this luxurious French-inspired townhouse, a stunning corner unit offering over 1,800 square feet of elegant living space. With 9-foot ceilings (11-foot ceilings in the master bedroom) and thoughtfully upgraded features throughout, this home perfectly combines comfort with modern sophistication. The main floor boasts an expansive living room with oversized windows on two sides, flooding the space with natural light. You'll also find a stylish glass-enclosed office, a convenient half bath, a dedicated dining area, and a gourmet kitchen featuring upgraded quartz countertops and a premium stainless steel appliance package, including a gas range and convection oven. Upstairs, retreat to the spacious primary suite, complete with a spa-like ensuite featuring a freestanding soaker tub and double sinks. This level also includes two additional large bedrooms, a full 4-piece bathroom, and the added convenience of an upstairs laundry. Beautiful high-end hardwood flooring flows throughout both the main and upper levels, enhancing the overall luxury feel. Finished basement with additional room. Oversized double garage! Enjoy outdoor living on the oversized gated patio, which overlooks a serene water feature, canal, and walking paths—the perfect place to relax or entertain. This unit is surrounded with beautiful trees and shrubs. Condo fees include HOA services, offering added value and peace of mind. Ideally situated within walking distance to the Remington YMCA, transit, parks,



playgrounds, and a variety of shops and restaurants. Or head in the other direction to explore scenic Bow River pathwaysâ€”this location truly has it all. Donâ€™t miss this exceptional opportunityâ€”book your private showing today!

Built in 2015

Essential Information

MLS® #	A2212143
Price	\$709,000
Bedrooms	4
Bathrooms	3.00
Full Baths	2
Half Baths	1
Square Footage	1,822
Acres	0.00
Year Built	2015
Type	Residential
Sub-Type	Row/Townhouse
Style	2 Storey
Status	Active

Community Information

Address	362 Quarry Park Boulevard Se
Subdivision	Douglasdale/Glen
City	Calgary
County	Calgary
Province	Alberta
Postal Code	T2C 5M9

Amenities

Amenities	Park, Playground
Parking Spaces	2
Parking	Double Garage Attached
# of Garages	2

Interior

Interior Features	Central Vacuum, Closet Organizers, High Ceilings, Kitchen Island, Quartz Counters, Separate Entrance
Appliances	Dishwasher, Dryer, Gas Stove, Microwave Hood Fan, Refrigerator, Washer
Heating	Forced Air
Cooling	Central Air, Rooftop
Has Basement	Yes
Basement	Finished, See Remarks

Exterior

Exterior Features	Other
Lot Description	Back Lane, Backs on to Park/Green Space, Low Maintenance Landscape, Street Lighting
Roof	Asphalt Shingle
Construction	Concrete, Mixed, Stone, Stucco, Wood Frame
Foundation	Poured Concrete

Additional Information

Date Listed	April 18th, 2025
Days on Market	66
Zoning	DC
HOA Fees Freq.	ANN

Listing Details

Listing Office	Grand Realty
----------------	--------------

Data is supplied by Pillar 9â„¢ MLSÂ® System. Pillar 9â„¢ is the owner of the copyright in its MLSÂ® System. Data is deemed reliable but is not guaranteed accurate by Pillar 9â„¢. The trademarks MLSÂ®, Multiple Listing ServiceÂ® and the associated logos are owned by The Canadian Real Estate Association (CREA) and identify the quality of services provided by real estate professionals who are members of CREA. Used under license.