

# \$160,000 - 17232b Range Road 540, Rural Yellowhead County

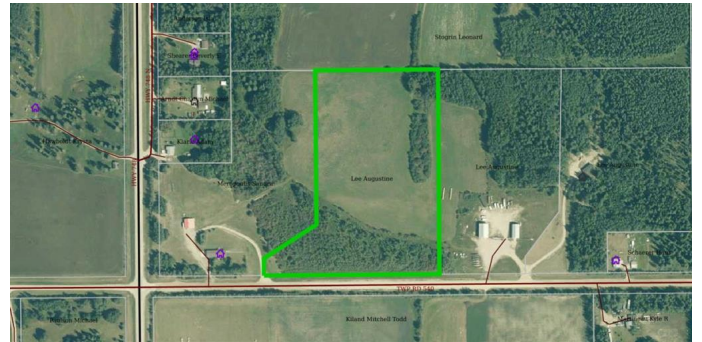
MLS® #A2209475

**\$160,000**

0 Bedroom, 0.00 Bathroom,  
Land on 14.28 Acres

NONE, Rural Yellowhead County, Alberta

14.28 acres 2 miles north of Edson via  
highway 748N. Pavement most of the way.  
1/4 mile of gravel. Lots of building sites



## Essential Information

MLS® #	A2209475
Price	\$160,000
Bathrooms	0.00
Acres	14.28
Type	Land
Sub-Type	Residential Land
Status	Active

## Community Information

Address	17232b Range Road 540
Subdivision	NONE
City	Rural Yellowhead County
County	Yellowhead County
Province	Alberta
Postal Code	T7E 3J7



## Amenities

Utilities Electricity Available, Natural Gas Available

## Exterior

Lot Description Rectangular Lot

## Additional Information

Date Listed	April 7th, 2025
Days on Market	76
Zoning	CRD

### **Listing Details**

Listing Office RE/MAX BOXSHAW FOUR REALTY

Data is supplied by Pillar 9â„¢ MLSÂ® System. Pillar 9â„¢ is the owner of the copyright in its MLSÂ® System. Data is deemed reliable but is not guaranteed accurate by Pillar 9â„¢. The trademarks MLSÂ®, Multiple Listing ServiceÂ® and the associated logos are owned by The Canadian Real Estate Association (CREA) and identify the quality of services provided by real estate professionals who are members of CREA. Used under license.