

\$159,000 - 6, 715049 Range Road 40 Abbey, Rural Grande Prairie No. 1, County of

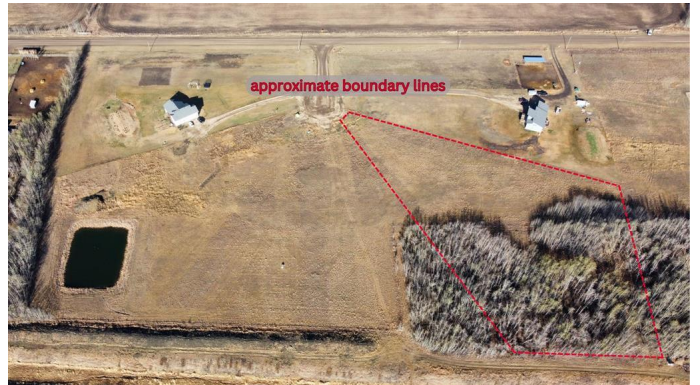
MLS® #A2205493

\$159,000

0 Bedroom, 0.00 Bathroom,
Land on 4.21 Acres

NONE, Rural Grande Prairie No. 1, County of,
Alberta

One of three adjoining vacant lots for sale in a 5-lot subdivision located less than 1km off the paved HWY 670 in the Glen Leslie area, just 15 minutes east of Grande Prairie. Buy the lot, pick your plan, and choose your own builder. Approaches are in and power and gas are already on the lot. Lot 6 is 4.21 acres and has a great stand of trees. And with two lots for sale on to the south of this property, you could buy two and double up your land size or have your friend or family member purchase a property too so you can know who your neighbors will be! Lots are zoned CR-2. Take a drive out and have a look or contact your favorite Real Estate Professional for more information.



Essential Information

| | |
|-----------|------------------|
| MLS® # | A2205493 |
| Price | \$159,000 |
| Bathrooms | 0.00 |
| Acres | 4.21 |
| Type | Land |
| Sub-Type | Residential Land |
| Status | Active |

Community Information

Address 6, 715049 Range Road 40 Abbey

| | |
|-------------|---------------------------------------|
| Subdivision | NONE |
| City | Rural Grande Prairie No. 1, County of |
| County | Grande Prairie No. 1, County of |
| Province | Alberta |
| Postal Code | T8X 4C2 |

Additional Information

| | |
|----------------|------------------|
| Date Listed | March 25th, 2025 |
| Days on Market | 148 |
| Zoning | CR-2 |

Listing Details

| | |
|----------------|---------------------------------|
| Listing Office | Royal LePage - The Realty Group |
|----------------|---------------------------------|

Data is supplied by Pillar 9â„¢ MLSÂ® System. Pillar 9â„¢ is the owner of the copyright in its MLSÂ® System. Data is deemed reliable but is not guaranteed accurate by Pillar 9â„¢. The trademarks MLSÂ®, Multiple Listing ServiceÂ® and the associated logos are owned by The Canadian Real Estate Association (CREA) and identify the quality of services provided by real estate professionals who are members of CREA. Used under license.