

# \$119,900 - 17 Crystal Crescent, Widewater

MLS® #A2192490

**\$119,900**

0 Bedroom, 0.00 Bathroom,  
Land on 1.52 Acres

N/A, Widewater, Alberta

Endless possibilities with this 1.5-acre parcel nestled within the Widewater's Southshore Estates - A haven for boating and fishing enthusiasts alike. Situated a mere 15-minute drive away from the amenities of Slave Lake and just moments from the Canyon Creek Marina. Cleared and ready for you to build your dream home or cabin with utilities at the lot line and plenty of space for your RV, and recreational toys. Come home to the country!

## Essential Information

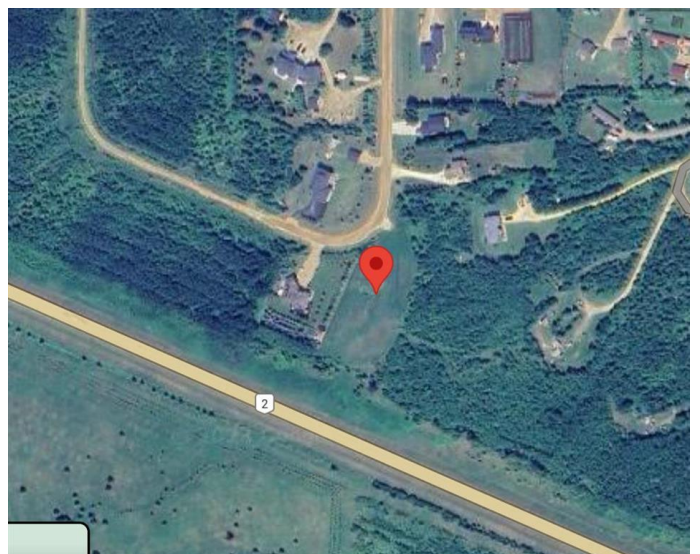
MLS® #	A2192490
Price	\$119,900
Bathrooms	0.00
Acres	1.52
Type	Land
Sub-Type	Residential Land
Status	Active

## Community Information

Address	17 Crystal Crescent
Subdivision	N/A
City	Widewater
County	Lesser Slave River No. 124,
Province	Alberta
Postal Code	T0G 2M0

## Exterior

Lot Description	Brush, Native Plants, Open Lot
-----------------	--------------------------------



## **Additional Information**

Date Listed	February 4th, 2025
Days on Market	136
Zoning	103 Residential Vacant

## **Listing Details**

Listing Office	REAL BROKER
----------------	-------------

Data is supplied by Pillar 9â„¸ MLSÂ® System. Pillar 9â„¸ is the owner of the copyright in its MLSÂ® System. Data is deemed reliable but is not guaranteed accurate by Pillar 9â„¸. The trademarks MLSÂ®, Multiple Listing ServiceÂ® and the associated logos are owned by The Canadian Real Estate Association (CREA) and identify the quality of services provided by real estate professionals who are members of CREA. Used under license.