

\$28 - 10002 94 Avenue, Grande Prairie

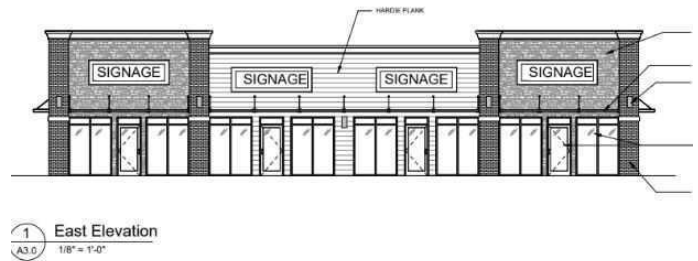
MLS® #A2187498

\$28

0 Bedroom, 0.00 Bathroom,
Land on 0.46 Acres

Swanavon., Grande Prairie, Alberta

4 BAY BUILD TO SUIT LEASE SPACE .
CENTRAL Location! Close to DOWNTOWN,
TRIALS and AMENITIES! This could be a
great OPPORTUNITY right in the heart of GP.
Plans for 4640 sqft building - BUILD TO SUIT!!
CAN DO SEVERAL OPTIONS FOR YOUR
BUSINESS NEEDS - Permitted uses -
Business Support Service, Commercial
Business Centre, Boarding House -
Discretionary uses - Supermarket, Vehicle
Wash, Multi-Attached Dwelling, Gas Bar. Drive
by today!



Essential Information

MLS® #	A2187498
Price	\$28
Bathrooms	0.00
Acres	0.46
Type	Land
Sub-Type	Commercial Land
Status	Active

Community Information

Address	10002 94 Avenue
Subdivision	Swanavon.
City	Grande Prairie
County	Grande Prairie
Province	Alberta
Postal Code	T8V 0K5

Additional Information

Date Listed	January 14th, 2025
Days on Market	237
Zoning	CT

Listing Details

Listing Office	Sutton Group Grande Prairie Professionals
----------------	---

Data is supplied by Pillar 9â„¢ MLS® System. Pillar 9â„¢ is the owner of the copyright in its MLS® System. Data is deemed reliable but is not guaranteed accurate by Pillar 9â„¢. The trademarks MLS®, Multiple Listing Service® and the associated logos are owned by The Canadian Real Estate Association (CREA) and identify the quality of services provided by real estate professionals who are members of CREA. Used under license.