

\$375,000 - 85 Clark Crescent Se, Medicine Hat

MLS® #A2170008

\$375,000

4 Bedroom, 2.00 Bathroom, 1,044 sqft

Residential on 0.15 Acres

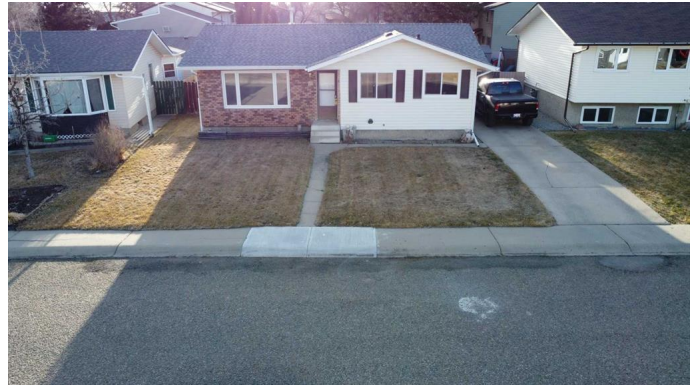
Southview-Park Meadows, Medicine Hat, Alberta

Welcome this newly renovated Bungalow 4 bedrooms plus an office and two Four-piece bathrooms with a separated entrance in a mature and quiet location SE of Medicine Hat. Brand new windows, brand new quartz countertops, new cupboards/cabinets, brand new floors and carpets, and new paints. The shingles were replaced at end of October 2024. Walk in the house, you will see an open concept living room, dining area and the kitchen with windows full of suns in the afternoon, on the south side you have 3 sunshine bedrooms In the morning with a 4 piece quartz countertop bathroom. A long driveway fits either 3 cars or a RV and a car. In the back you have a super size insulated 24x28 double garage. The coulee walk path just a minute away cross Carry Drive, and few minutes drive to Mother Teresa School, Medicine Hat Mall, Superstore, Best Buy, Banks, Doctor offices, Lawyer offices, and parks. Come to see this beautiful home! It's ready to move in and enjoy!

Built in 1976

Essential Information

MLS® #	A2170008
Price	\$375,000
Bedrooms	4
Bathrooms	2.00



Full Baths	2
Square Footage	1,044
Acres	0.15
Year Built	1976
Type	Residential
Sub-Type	Detached
Style	Bungalow
Status	Active

Community Information

Address	85 Clark Crescent Se
Subdivision	Southview-Park Meadows
City	Medicine Hat
County	Medicine Hat
Province	Alberta
Postal Code	T1B1S3

Amenities

Parking Spaces	4
Parking	Double Garage Detached, Front Drive
# of Garages	2

Interior

Interior Features	Stone Counters, Vinyl Windows, Pantry, Separate Entrance
Appliances	Dishwasher, Microwave, Refrigerator, Central Air Conditioner, Electric Stove, Range Hood, Washer/Dryer
Heating	Forced Air
Cooling	Central Air
Has Basement	Yes
Basement	Finished, Full

Exterior

Exterior Features	Private Yard
Lot Description	Back Yard, Landscaped
Roof	Asphalt Shingle
Construction	Vinyl Siding, Wood Frame, Concrete
Foundation	Poured Concrete

Additional Information

Date Listed	March 10th, 2025
Days on Market	51
Zoning	R-LD

Listing Details

Listing Office	ROYAL LEPAGE COMMUNITY REALTY
----------------	-------------------------------

Data is supplied by Pillar 9â„¢ MLS® System. Pillar 9â„¢ is the owner of the copyright in its MLS® System. Data is deemed reliable but is not guaranteed accurate by Pillar 9â„¢. The trademarks MLS®, Multiple Listing Service® and the associated logos are owned by The Canadian Real Estate Association (CREA) and identify the quality of services provided by real estate professionals who are members of CREA. Used under license.