

# \$549,900 - 1815 50 Avenue, Lloydminster

MLS® #A2167585

**\$549,900**

0 Bedroom, 0.00 Bathroom,  
Land on 0.89 Acres

Wallacefield, Lloydminster, Saskatchewan

Are you looking for that perfect spot to build your business? This prime piece of land has the potential to check off all the boxes with easy access to HWY 17, high traffic location, close proximity to the Servus Sports Centre, and numerous other thriving businesses. Get started on your new business venture!

## Essential Information

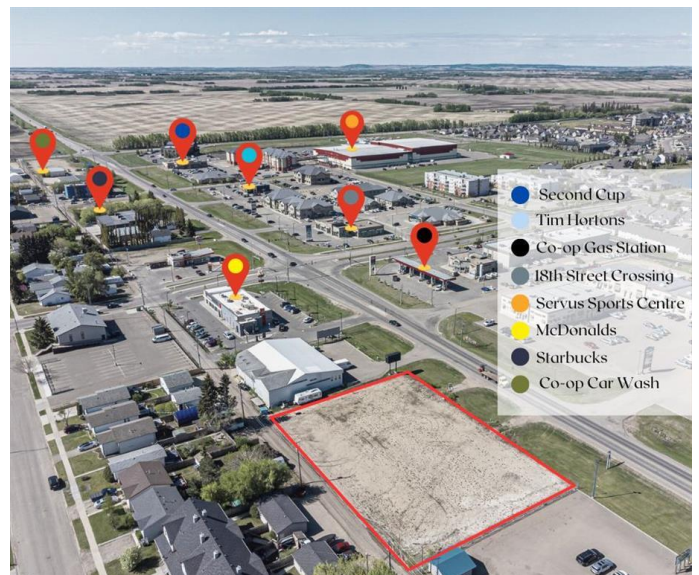
MLS® #	A2167585
Price	\$549,900
Bathrooms	0.00
Acres	0.89
Type	Land
Sub-Type	Commercial Land
Status	Active

## Community Information

Address	1815 50 Avenue
Subdivision	Wallacefield
City	Lloydminster
County	Lloydminster
Province	Saskatchewan
Postal Code	S9V 2H8

## Additional Information

Date Listed	September 20th, 2024
Days on Market	270
Zoning	C2



**Listing Details**

Listing Office                    MUSGRAVE AGENCIES

Data is supplied by Pillar 9â„¢ MLS® System. Pillar 9â„¢ is the owner of the copyright in its MLS® System. Data is deemed reliable but is not guaranteed accurate by Pillar 9â„¢. The trademarks MLS®, Multiple Listing Service® and the associated logos are owned by The Canadian Real Estate Association (CREA) and identify the quality of services provided by real estate professionals who are members of CREA. Used under license.