

\$109,900 - Lot 5 114046 Township 590, Rural Woodlands County

MLS® #A2132255

\$109,900

0 Bedroom, 0.00 Bathroom,
Land on 5.08 Acres

NONE, Rural Woodlands County, Alberta

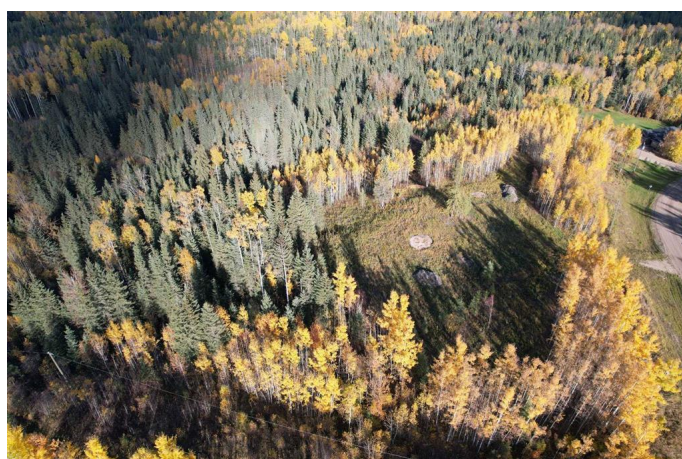
Stunning 5.07 acre lot that is freshly cleared providing a future buyer with a perfect clean slate to build on. There is potential of a house design with a walk out basement. The different elevations add some dimension, and adventure with this land bordering Beaver Creek down below, a perfect little picnic spot to cool off and hang out on the weekends. This subdivision is very close to town and has a wonderful community of neighbours mixed with the perfect amount of privacy.

Essential Information

MLS® #	A2132255
Price	\$109,900
Bathrooms	0.00
Acres	5.08
Type	Land
Sub-Type	Residential Land
Status	Active

Community Information

Address	Lot 5 114046 Township 590
Subdivision	NONE
City	Rural Woodlands County
County	Woodlands County
Province	Alberta
Postal Code	T7S 0A1



Additional Information

Date Listed May 15th, 2024

Days on Market 524

Zoning CR

Listing Details

Listing Office RE/MAX ADVANTAGE (WHITECOURT)

Data is supplied by Pillar 9â„¸ MLSÂ® System. Pillar 9â„¸ is the owner of the copyright in its MLSÂ® System. Data is deemed reliable but is not guaranteed accurate by Pillar 9â„¸. The trademarks MLSÂ®, Multiple Listing ServiceÂ® and the associated logos are owned by The Canadian Real Estate Association (CREA) and identify the quality of services provided by real estate professionals who are members of CREA. Used under license.