

# \$69,000 - Lot 15 Campsite Road, Plamondon

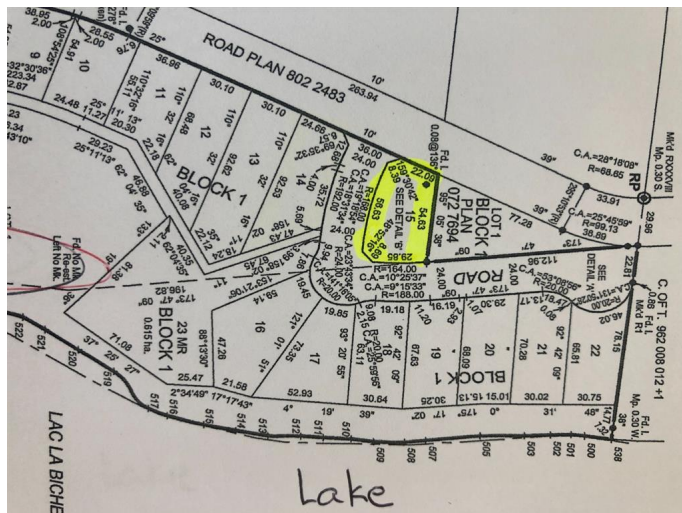
MLS® #A2112323

**\$69,000**

0 Bedroom, 0.00 Bathroom,  
Land on 0.51 Acres

NONE, Plamondon, Alberta

You can't get any closer to the lake for this price. Just a one minute walk and you're sitting on a large sandy beach. There are NO BUILDING RESTRICTIONS and RV'S are allowed here at Amity Beach subdivision located on the west shore of Lac La Biche Lake. Located near Plamondon White Sands Resort, this area is just 2.5 hours from Fort McMurray or 2 hours drive north of Edmonton. This 1/2 acre parcel is treed and has gas and power at the property line and is considered a lake back lot. A very private RV lot could be created here! GST applicable.



## Essential Information

|           |                  |
|-----------|------------------|
| MLS® #    | A2112323         |
| Price     | \$69,000         |
| Bathrooms | 0.00             |
| Acres     | 0.51             |
| Type      | Land             |
| Sub-Type  | Residential Land |
| Status    | Active           |

## Community Information

|             |                      |
|-------------|----------------------|
| Address     | Lot 15 Campsite Road |
| Subdivision | NONE                 |
| City        | Plamondon            |
| County      | Lac La Biche County  |
| Province    | Alberta              |
| Postal Code | T0A 2T0              |

**Amenities**

|               |  |
|---------------|--|
| Utilities     | Electricity at Lot Line, Natural Gas at Lot Line |
| Is Waterfront | Yes  |

**Exterior**

|                 |                                     |
|-----------------|-------------------------------------|
| Lot Description | Brush, Greenbelt, Level, Waterfront |
|-----------------|-------------------------------------|

**Additional Information**

|                |                 |
|----------------|-----------------|
| Date Listed    | March 4th, 2024 |
| Days on Market | 550             |
| Zoning         | CR              |

**Listing Details**

|                |                   |
|----------------|-------------------|
| Listing Office | PEOPLE 1st REALTY |
|----------------|-------------------|

Data is supplied by Pillar 9â„¢ MLS® System. Pillar 9â„¢ is the owner of the copyright in its MLS® System. Data is deemed reliable but is not guaranteed accurate by Pillar 9â„¢. The trademarks MLS®, Multiple Listing Service® and the associated logos are owned by The Canadian Real Estate Association (CREA) and identify the quality of services provided by real estate professionals who are members of CREA. Used under license.